



HEAVENLY



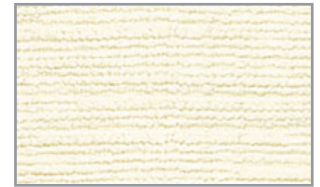
Cavier



Mulberry



Coral



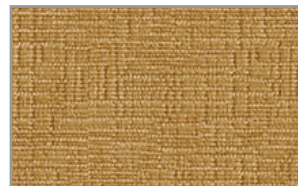
Oyster



Java



Capitol Blue



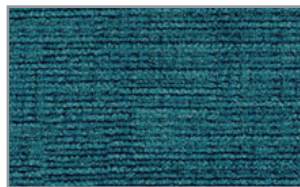
Safari



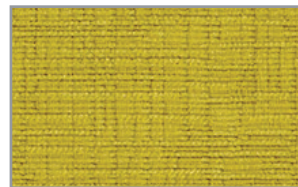
Cream



Army



Deep Sea



Mojito



Sunshine



Copper



Sapphire



Apple



Mineral



Cinnamon



Denim








Chartreuse



Cinder

TECHNICAL INFORMATION

WIDTH/ PATTERN	FIBER CONTENT & BACKING	WEIGHT	PROTECTIVE FINISH	ABRASION RESISTANCE	LIGHT- FASTNESS	APPROX. REPEATS	CI. CODE
55" HEAVENLY WITH ENDUREPEL     	100% POLYESTER 100% ACRYLIC KISS COAT	13.3 OZ./ LINEAR YARD ± 1.0 OZ.	NONE	125,000 DOUBLE RUBS	CLASS 4.5 40 HOURS	N/A	SW

EXPLANATION OF ACT ICONS FOR UPHOLSTERY

 **FLAMMABILITY**

The measurement of a fabric's performance when it is exposed to specific sources of ignition.

PASSES California Technical Bulletin 117-2013 Section 1

 **WET & DRY CROCKING**

Transfer of dye from the surface of a dyed or printed fabric onto another surface by rubbing.

PASSES Minimum AATCC 8 Dry = Grade 4; Wet = Grade 3

 **COLORFASTNESS TO LIGHT**

Colorfastness to light is a material's degree of resistance to the fading effect of light.

PASSES Minimum AATCC 16: Grade 4 minimum 40hrs

 **PHYSICAL PROPERTIES**

Three physical property tests include: 1 - Martindale Tester to determine a fabric's pilling (the formation of fuzzy balls of fiber on the surface of a fabric); 2 - Breaking Strength to determine the ability of a fabric to withstand tension without breaking or tearing; 3 - Seam Slippage to determine the extent of the pulling apart of fabrics at the seams.

PASSES

Pilling ASTM D4970 (Martindale Tester)

Breaking Strength ASTM D5034 (Grab Test), 50 lbs. minimum in warp and weft

Seam Slippage ASTM D4034, 25 lbs. minimum in warp and weft

 **ABRASION**

Abrasion is the ability of a fabric to withstand damage from wear and rubbing.

PASSES ASTM D4157 (ACT approved #10 Cotton Duck) 30,000 double rubs Wyzenbeek Method

CLEANING CODE DEFINITIONS

SW - Clean fabrics with water-based cleaning agents. We recommend using a professional cleaning service. Please refer to manufacturer's website for detailed cleaning instructions

Grade 3 as of May 2023. This document is a living document and uncontrolled when printed. Price grade is subject to change.

TO VIEW OUR ENTIRE FABRIC COLLECTION, VISIT ALLSEATING.COM

QUESTIONS? Email us at marketing@allseating.com T 1 800 563 3502 F 1 800 272 9911

TORONTO

5800 Avebury Road, Unit 2
Mississauga, ON L5R 3M3

CHICAGO*

325 North Wells Street, Suite 210
Chicago, IL 60654

*By appointment only

NEW YORK*

1140 Broadway, Suite 307
New York, NY 10001