



Oyster



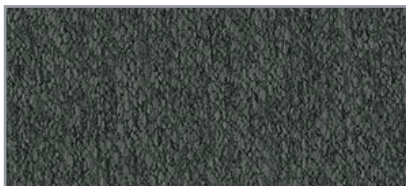
Slate



Sable



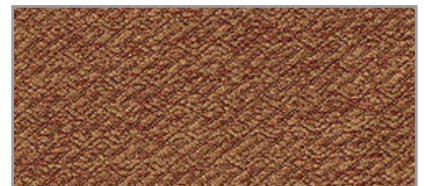
Poppy



Charcoal



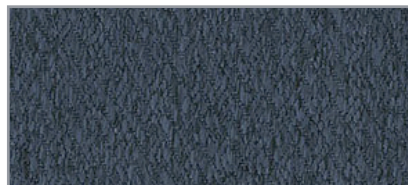
Mineral



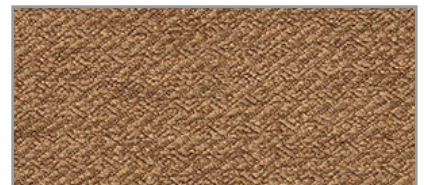
Amber



Pewter



Indigo



Ginger



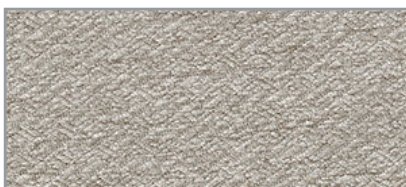
Cinder



Meadow



Golden



Oyster




Cypress



Fawn

TECHNICAL INFORMATION

WIDTH/ PATTERN	FIBER CONTENT & BACKING	WEIGHT	PROTECTIVE FINISH	ABRASION RESISTANCE	LIGHT- FASTNESS	APPROX. REPEATS	CI. CODE
56" HARPER 	100% POLYESTER	10.5 OZ./ LINEAR YARD ± 1.0 OZ.	NONE	145,000 DOUBLE RUBS	CLASS 4.5 40 HOURS	N/A	W

EXPLANATION OF ACT ICONS FOR UPHOLSTERY

 **FLAMMABILITY**

The measurement of a fabric's performance when it is exposed to specific sources of ignition.

PASSES California Technical Bulletin 117-2013 Section 1

 **WET & DRY CROCKING**

Transfer of dye from the surface of a dyed or printed fabric onto another surface by rubbing.

PASSES Minimum AATCC 8 Dry = Grade 4; Wet = Grade 3

 **COLORFASTNESS TO LIGHT**

Colorfastness to light is a material's degree of resistance to the fading effect of light.

PASSES Minimum AATCC 16: Grade 4 minimum 40hrs

 **PHYSICAL PROPERTIES**

Three physical property tests include: 1 - Martindale Tester to determine a fabric's pilling (the formation of fuzzy balls of fiber on the surface of a fabric); 2 - Breaking Strength to determine the ability of a fabric to withstand tension without breaking or tearing; 3 - Seam Slippage to determine the extent of the pulling apart of fabrics at the seams.

PASSES

Pilling ASTM D4970 (Martindale Tester)

Breaking Strength ASTM D5034 (Grab Test), 50 lbs. minimum in warp and weft

Seam Slippage ASTM D4034, 25 lbs. minimum in warp and weft

 **ABRASION**

Abrasion is the ability of a fabric to withstand damage from wear and rubbing.

PASSES ASTM D4157

(ACT approved #10 Cotton Duck)  
30,000 double rubs Wyzenbeek Method

**CLEANING CODE DEFINITIONS**

W - Clean fabrics with water-based cleaning agents or water-based foam. We recommend using a professional cleaning service. Please refer to manufacturer's website for detailed cleaning instructions

Grade 2 as of May 2023. This document is a living document and uncontrolled when printed. Price grade is subject to change.

TO VIEW OUR ENTIRE FABRIC COLLECTION, VISIT [ALLSEATING.COM](http://ALLSEATING.COM)

**QUESTIONS?** Email us at [marketing@allseating.com](mailto:marketing@allseating.com) T 1 800 563 3502 F 1 800 272 9911

**TORONTO**

5800 Avebury Road, Unit 2  
Mississauga, ON L5R 3M3

**CHICAGO\***

325 North Wells Street, Suite 210  
Chicago, IL 60654

\*By appointment only

**NEW YORK\***

1140 Broadway, Suite 307  
New York, NY 10001