

BETA
TACK
OTTO
PIP
MALT
BARLEY
KOI
PEEL
MARIGOLD
COPPER
ZEST
SARI
QUINCE
GRENADINE
AGATE
FIZZ
GROTTO
LAKE
MALACHITE
VIVID
CHALICE
PEARL
QUARTZ
PEWTER
TWINE
PEPPER

TEXTURED WEAVE CARD

MOMENTUM
TEXTILES



BETA MALT



PIP ZEST



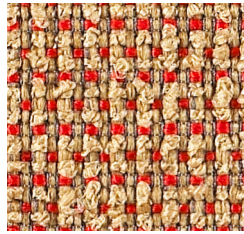
BETA QUINCE



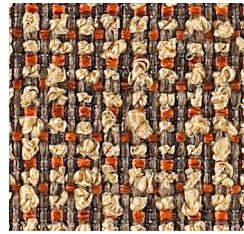
OTTO MIDAS



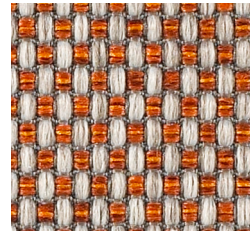
TACK BARLEY



PIP SARI



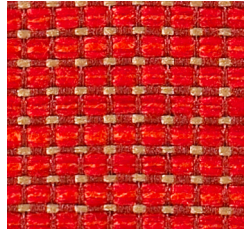
PIP ANISE



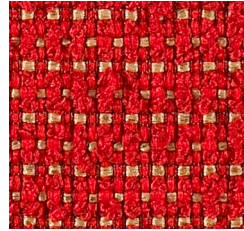
OTTO AGATE



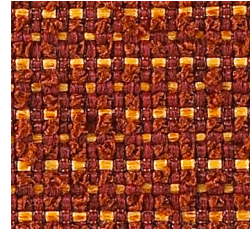
BETA KOI



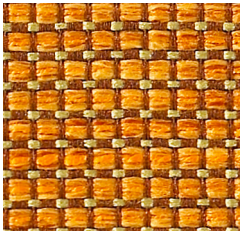
TACK FLARE



PIP GRENADINE



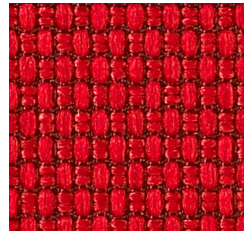
PIP AMBER



TACK PEEL



PIP POPPY



OTTO GARNET



OTTO PINOT



OTTO MARIGOLD



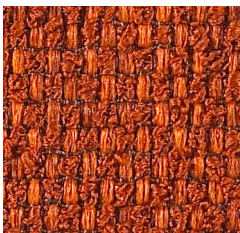
OTTO ALARM



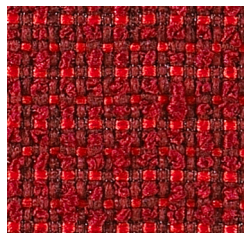
TACK RUBY



OTTO HEATHER



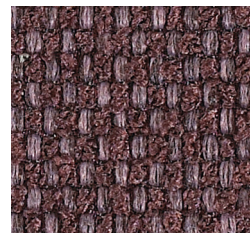
BETA COPPER



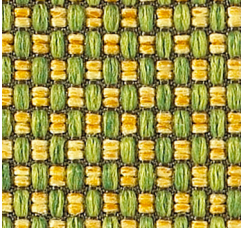
PIP CRIMSON



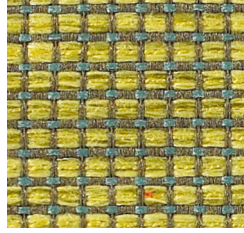
BETA MADDER



BETA CASSIS



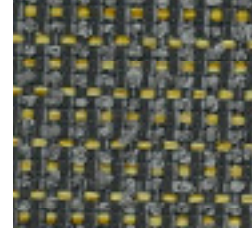
OTTO FIZZ



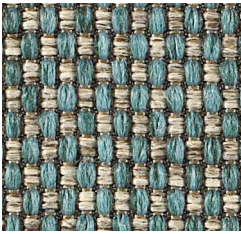
TACK LIMADE



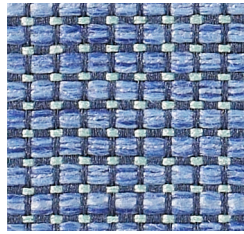
BETA IVY



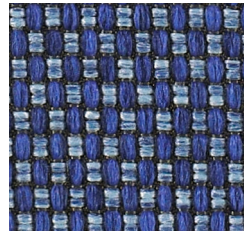
PIP CHALICE



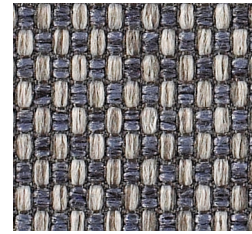
OTTO GROTTO



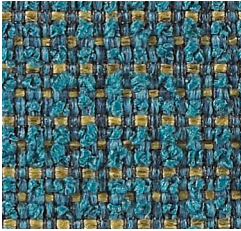
TACK POUR



OTTO VIVID



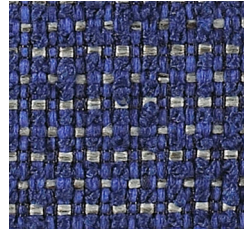
OTTO SLATE



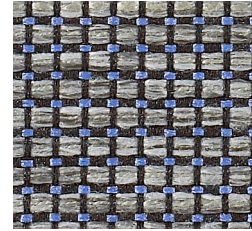
PIP CALYPSO



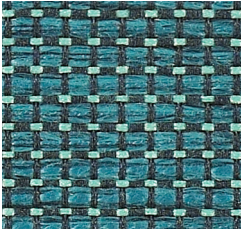
PIP LAKE



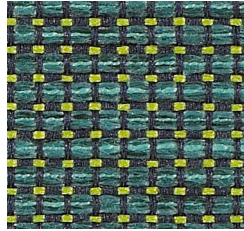
PIP YACHT



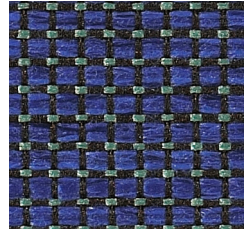
TACK FORTRESS



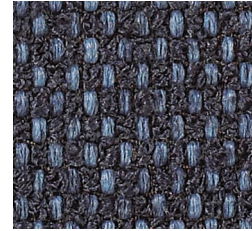
TACK BAMBINO



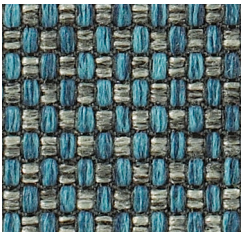
TACK CREST



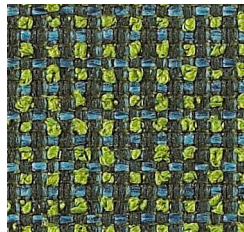
TACK ROYAL



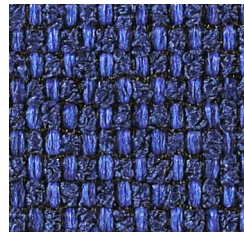
BETA CADET



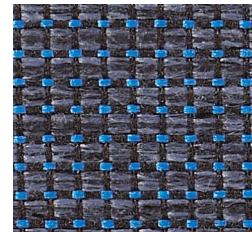
OTTO CYPRUS



PIP MALACHITE



BETA LAPIS



TACK PACIFIC



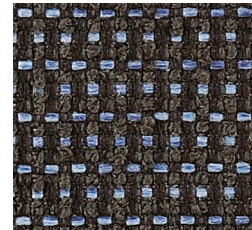
BETA JUNIPER



BETA AZURE



OTTO GULF



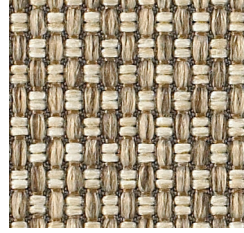
PIP DUSK



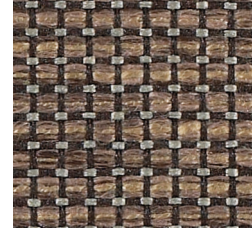
BETA PEARL



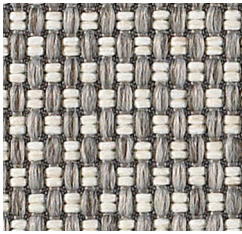
OTTO MINERAL



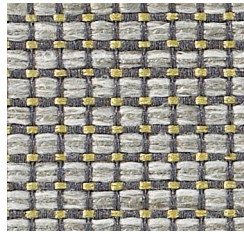
OTTO PUMICE



TACK MAGNETIC



OTTO ALLOY



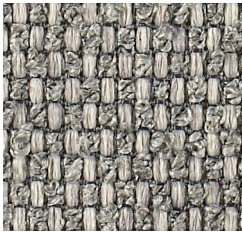
TACK QUARTZ



BETA SAND



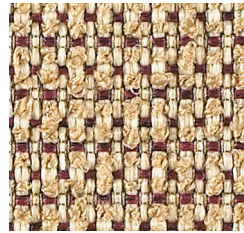
BETA BARK



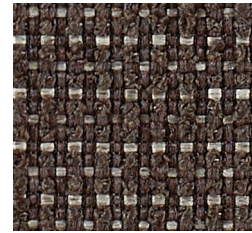
BETA CRATER



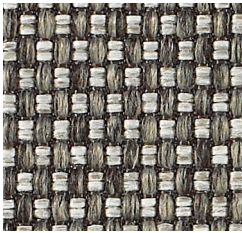
PIP PEWTER



PIP HENNA



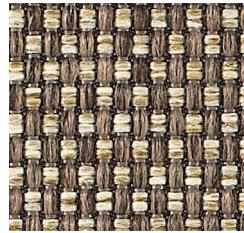
PIP TURRET



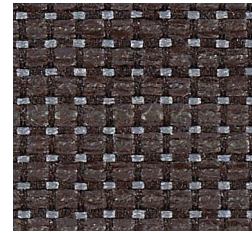
OTTO FLINT



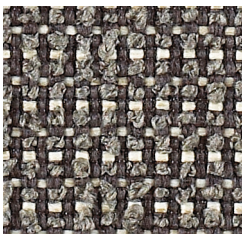
BETA CINDER



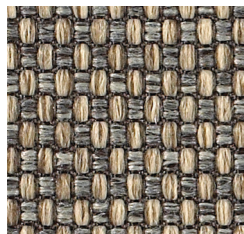
OTTO SEED



TACK CARBON



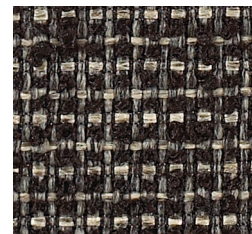
PIP RUNE



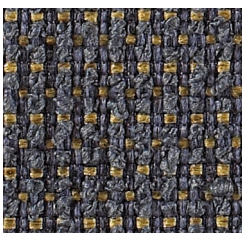
OTTO DRIFTWOOD



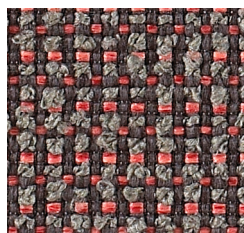
BETA TWINE



PIP PEPPER



PIP CALICO



PIP CHESIRE























BETA DECK



BETA BASALT

Technical Information

Width/ Pattern	Fabric Grade	Fiber Content & Backing	Weight	Abrasion Resistance	Light- fastness	Approx. Repeats	Cl. Code
55" Beta     	5	67% Repreve® Recycled Polyester, 33% Polyester Acrylic Backing	1.93 lb./ linear yard	190,000 Double Rubs	40 Hours Class 4	1/4" L, 1/8" W	WS
55" Otto     	5	50% Repreve® Polyester, 50% Recycled Polyester Acrylic Backing	1.75 lb./ linear yard	200,000 Double Rubs	40 Hours Class 4.5	1/4" L, 1/8" W	WS
55" Pip     	5	53% Repreve® Recycled Polyester, 47% Polyester Acrylic Backing	1.75 lb./ linear yard	200,000 Double Rubs	40 Hours Class 4.5	1/4" L, 1/8" W	WS
55" Tack     	5	57% Repreve® Recycled Polyester, 43% Polyester Acrylic Backing	1.28 lb./ linear yard	55,000 Double Rubs	40 Hours Class 5	1/4" L, 1/8" W	WS

EXPLANATION OF ACT ICONS FOR UPHOLSTERY

Fire Retardancy

Flammability testing determined as fabric's resistance to burning.

PASSES California 117 2013

Colorfastness to Wet and Dry Crocking

Colorfastness to wet & dry crocking refers to the rubbing off of color from the fabric onto clothing, hands or other materials and can occur under wet or dry conditions.

PASSES AATCC 8-1974 Dry Crocking: Class 4 minimum; Wet Crocking: Class 3 minimum

Colorfastness to Light

Colorfastness to light is the degree to which fabric will retain its color when exposed to light.

PASSES AATCC 16A-1974 or AATCC 16E-1976; Class 4 minimum at 40 hours

NOTE: Class 4 minimum at 60 hours is recommended for direct sunlight exposure situations.

Physical Properties


3 physical property tests include: brush pill test to determine a fabric's pilling. Breaking/tensile strength is the ability of a fabric to withstand tension without breaking or tearing. Seam slippage is the pulling apart of fabrics at the seams.

PASSES Brush Pill ASTM D3511, 3-4 minimum
Breaking Strength ASTM D3597-D1682-64 (1975)
50 lbs. minimum in warp & weft

Abrasion

Abrasion is the ability of a fabric to withstand damage from wear and rubbing. There is a general contract specification as well as heavy duty specification.

PASSES

 (Heavy Duty) ASTM 3597 modified (#10 cotton duck); 30,000 double rubs Wyzenbeek Method or ASTM D4966 (with 21 oz. weight); 40,000 rubs Martindale Method

Cleaning Code Definitions

WS Water-based cleaning agents or foam.

Please visit manufacturer's website for cleaning guide at www.themomgroup.com

TORONTO

5800 Avebury Road, Unit 2
Mississauga, ON L5R 3M3

SKU B10025

CHICAGO*

325 North Wells Street, Suite 210
Chicago, IL 60654

Printed in Canada 02/2020

NEW YORK*

1140 Broadway, Suite 307
New York, NY 10001

*By appointment only

FOR ADDITIONAL COLORS OR
TO VIEW OUR ENTIRE FABRIC
COLLECTION, VISIT ALLSEATING.COM

T 1 800 563 3502 F 1 800 272 9911