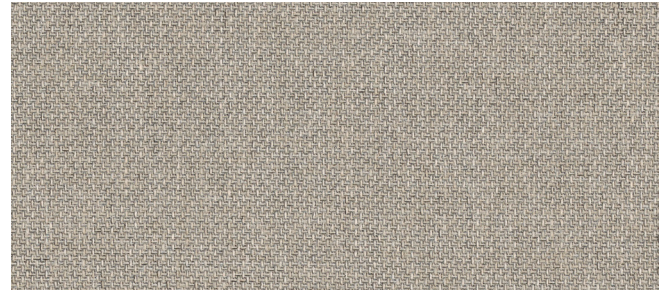


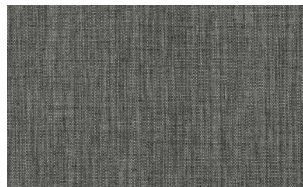
ARTISAN Quill



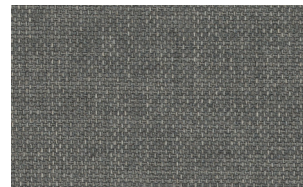
TRIBECA Dove



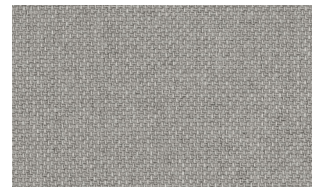
Marled



Tungsten



Slate



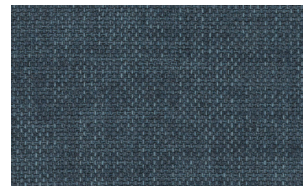
Sliver



London



Seaport



Regatta



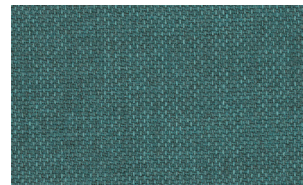
Shadow



Fossil



Marlin



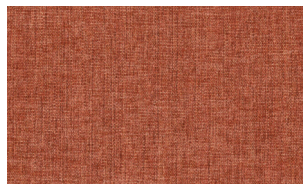
Teal



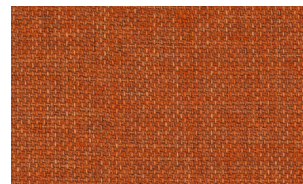
Jute



Hearth



Nectar



Burnt Orange



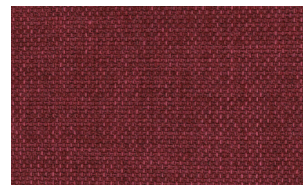
Truffle



Darth



Barberry













Cassis



Caviar

# Technical Information

Width/ Pattern	Fabric Grade	Fiber Content & Backing	Weight	Abrasion Resistance	Light- fastness	Approx. Repeats	Cl. Code
54" Artisan     	5	100% Polyester with SBR Synthetic Backing	11.5 oz	100,000 Double Rubs	40 Hours Class 4.5	N/A	WS
54" Tribeca     	5	100% Polyester with SBR Synthetic Backing	14.5 oz	100,000 Double Rubs	40 Hours Class 4.0	N/A	S

## EXPLANATION OF ACT ICONS FOR UPHOLSTERY

### Fire Retardancy

Flammability testing determined as fabric's resistance to burning.

**PASSES** California 117 2013

### Colorfastness to Wet and Dry Crocking

Colorfastness to wet & dry crocking refers to the rubbing off of color from the fabric onto clothing, hands or other materials and can occur under wet or dry conditions.

**PASSES** AATCC 8-1974 Dry Crocking: Class 4 minimum; Wet Crocking: Class 3 minimum

### Colorfastness to Light

Colorfastness to light is the degree to which fabric will retain its color when exposed to light.

**PASSES** AATCC 16A-1974 or AATCC 16E-1976; Class 4 minimum at 40 hours

**NOTE:** Class 4 minimum at 60 hours is recommended for direct sunlight exposure situations.

### Physical Properties

3 physical property tests include: brush pill test to determine a fabric's pilling. Breaking/tensile strength is the ability of a fabric to withstand tension without breaking or tearing. Seam slippage is the pulling apart of fabrics at the seams.

**PASSES** Brush Pill ASTM D3511, 3-4 minimum  
Breaking Strength ASTM D3597-D1682-64 (1975)  
50 lbs. minimum in warp & weft

### Abrasion

Abrasion is the ability of a fabric to withstand damage from wear and rubbing. There is a general contract specification as well as heavy duty specification.

### **PASSES**

 (Heavy Duty) ASTM 3597 modified (#10 cotton duck); 30,000 double rubs Wyzenbeek Method or ASTM D4966 (with 21 oz. weight); 40,000 rubs Martindale Method

### Cleaning Code Definitions

**WS** Water-based stains use water-based cleaners. For oil-based stains use solvent-based cleaners. We recommend using a professional cleaning service.

**S** Clean with mild, water-free solvent-based cleaners only. Do not use water.

Please visit manufacturer's website for cleaning guide at [www.cfstinson.com](http://www.cfstinson.com)

## TORONTO

5800 Avebury Road, Unit 2  
Mississauga, ON L5R 3M3

SKU B10008

## CHICAGO\*

325 North Wells Street, Suite 210  
Chicago, IL 60654

Printed in Canada 04/2019

## NEW YORK\*

1140 Broadway, Suite 307  
New York, NY 10001

\*By appointment only

## TO VIEW OUR ENTIRE FABRIC

**COLLECTION, VISIT [ALLSEATING.COM](http://ALLSEATING.COM)**

† 1 800 563 3502 ‡ 1 800 272 9911