

# Stinson

# PERFORMANCE SMALL SCALE



ADAGIO Merino



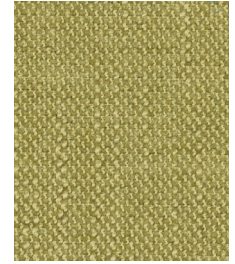
Driftwood



Cliff



Nautilus



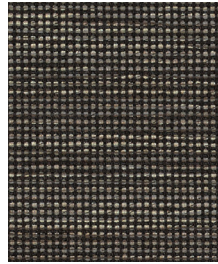
Wild Rye



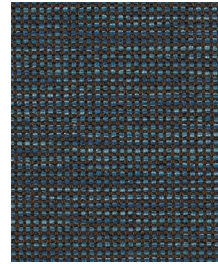
GRAVITY Coconut



Granite



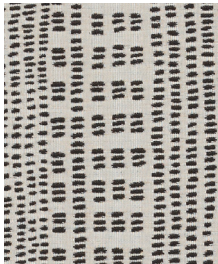
Pepper



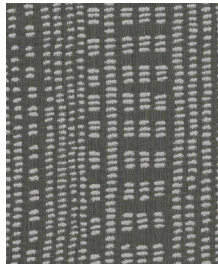
Mystic



Kiwi



HANDWORK Peppercorn



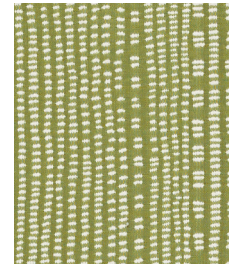
Skyscraper



Ganache



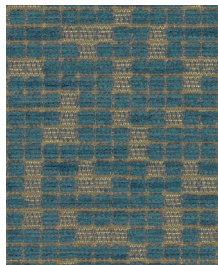
Stella



Mojito



ANAGRAM Magnetic



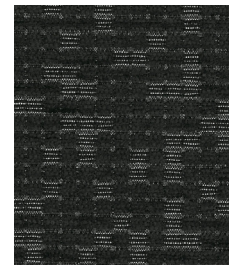
Aegean



Espresso



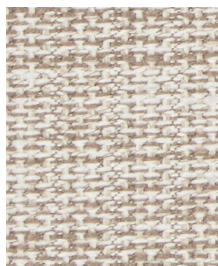
Nocturne



Midnight



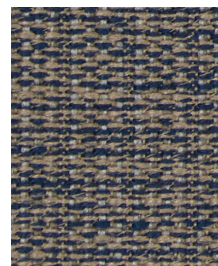
KNOT\* Rush



Alder



Sisal








Sakiori



Icon

\*Pattern Knot is being phased out. Please contact Allseating's customer service team to check availability.

# Technical Information

| Width/<br>Pattern                                                                                                                                                                                                                                                                                                                                                                                                                        | Fabric<br>Grade | Fiber Content<br>& Backing                                                                                                         | Weight    | Abrasion<br>Resistance | Light-<br>fastness    | Approx.<br>Repeats                     | Cl.<br>Code |
|------------------------------------------------------------------------------------------------------------------------------------------------------------------------------------------------------------------------------------------------------------------------------------------------------------------------------------------------------------------------------------------------------------------------------------------|-----------------|------------------------------------------------------------------------------------------------------------------------------------|-----------|------------------------|-----------------------|----------------------------------------|-------------|
| 54" Adagio<br>       | 6               | 100% Polyester<br>Crypton® Fluid<br>Barrier                                                                                        | 22.76 oz. | 100,000<br>Double Rubs | 40 Hours<br>Class 4.0 | N/A                                    | W           |
| 54" Gravity<br>      | 6               | 85% Polyester,<br>14% Post Consumer<br>Recycled Polyester,<br>1% Solution Dyed Nylon<br>with Acrylic Backing                       | 19.7 oz.  | 100,000<br>Double Rubs | 40 Hours<br>Class 4.0 | N/A                                    | WS          |
| 54" Handwork<br>     | 6               | 86% Polyester,<br>9% Post Industrial<br>Recycled Polyester,<br>5% Post Consumer<br>Recycled Polyester with<br>Acrylic Back Coating | 24.8 oz.  | 78,000<br>Double Rubs  | 40 Hours<br>Class 4.0 | H: 7.125"<br>V: 14.125"<br>Directional | WS          |
| 54" Anagram<br>      | 6               | 57% Polyester,<br>31% Post Consumer<br>Recycled Polyester,<br>12% Post Industrial<br>Recycled Polyester<br>with Acrylic Backing    | 16.7 oz.  | 100,000<br>Double Rubs | 40 Hours<br>Class 5.0 | H: 7.125"<br>V: 13.625"<br>Directional | WS          |
| 54" Knot<br>         | 6               | 86% Olefin,<br>14% Polyester<br>with Latex Backing                                                                                 | 24.3 oz.  | 50,000<br>Double Rubs  | 40 Hours<br>Class 4.0 | N/A                                    | WS          |

## EXPLANATION OF ACT ICONS FOR UPHOLSTERY

### Fire Retardancy

Flammability testing determined as fabric's resistance to burning.

PASSES California 117 2013

### Colorfastness to Wet and Dry Crocking

Colorfastness to wet & dry crocking refers to the rubbing off of color from the fabric onto clothing, hands or other materials and can occur under wet or dry conditions.

PASSES AATCC 8-1974 Dry Crocking: Class 4 minimum; Wet Crocking: Class 3 minimum

### Colorfastness to Light

Colorfastness to light is the degree to which fabric will retain its color when exposed to light.

PASSES AATCC 16A-1974 or AATCC 16E-1976; Class 4 minimum at 40 hours

NOTE: Class 4 minimum at 60 hours is recommended for direct sunlight exposure situations.

### Physical Properties


3 physical property tests include: brush pill test to determine a fabric's pilling. Breaking/tensile strength is the ability of a fabric to withstand tension without breaking or tearing. Seam slippage is the pulling apart of fabrics at the seams.

PASSES Brush Pill ASTM D3511, 3-4 minimum  
Breaking Strength ASTM D3597-D1682-64 (1975)  
50 lbs. minimum in warp & weft

### Abrasion

Abrasion is the ability of a fabric to withstand damage from wear and rubbing. There is a general contract specification as well as heavy duty specification.

#### PASSES

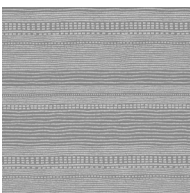
 (Heavy Duty) ASTM 3597 modified (#10 cotton duck); 30,000 double rubs Wyzenbeek Method or ASTM D4966 (with 21 oz. weight); 40,000 rubs Martindale Method

### Cleaning Code Definitions

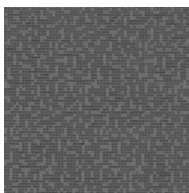
**W** Clean with water-based foam or water-based cleaners only. Do not use solvents. We recommend using a professional cleaning service.

**WS** For water-based stains use water-based cleaners. For oil-based stains use solvent-based cleaners. We recommend using a professional cleaning service.

Please visit manufacturer's website for cleaning guide at [www.cfstinson.com](http://www.cfstinson.com)



Handwork



Anagram

### TORONTO

5800 Avebury Road, Unit 2  
Mississauga, ON L5R 3M3

SKU B10009

### CHICAGO\*

325 North Wells Street, Suite 210  
Chicago, IL 60654

Printed in Canada 04/2019

### NEW YORK\*

1140 Broadway, Suite 307  
New York, NY 10001

\*By appointment only

### TO VIEW OUR ENTIRE FABRIC

COLLECTION, VISIT [ALLSEATING.COM](http://ALLSEATING.COM)

T 1 800 563 3502 F 1 800 272 9911