

MAIN LINE FLAX SYNERGY MAIN LINE TWIST

NATURAL
WOOLS
camira

TECHNICAL INFORMATION							
WIDTH/ PATTERN	FIBER CONTENT & BACKING	WEIGHT	PROTECTIVE FINISH	ABRASION RESISTANCE	LIGHT- FASTNESS	APPROX. REPEATS	CI. CODE
54" MAIN LINE FLAX 🔥 🧴 ☀️ ☆ ⚠️	75% PURE NEW WOOL 25% FLAX	13 OZ./ LINEAR YARD	NONE	100,000 DOUBLE RUBS	CLASS 4 40 HOURS	NONE	W/S
54" MAIN LINE TWIST 🔥 🧴 ☀️ ☆ ⚠️	75% PURE NEW WOOL 25% FLAX	13OZ./ LINEAR YARD	NONE	100,000 DOUBLE RUBS	CLASS 4 40 HOURS	NONE	W/S
54" SYNERGY 🔥 🧴 ☀️ ☆ ⚠️	95% PURE NEW WOOL 5% NYLON	11.75 OZ./ LINEAR YARD	NONE	100,000 CYCLES	CLASS 4 40 HOURS	NONE	W/S

EXPLANATION OF ACT ICONS FOR UPHOLSTERY

🔥 FLAMMABILITY

The measurement of a fabric's performance when it is exposed to specific sources of ignition.

PASSES California Technical Bulletin 117-2013 Section 1

🧴 WET & DRY CROCKING

Transfer of dye from the surface of a dyed or printed fabric onto another surface by rubbing.

PASSES Minimum AATCC 8 Dry = Grade 4; Wet = Grade 3

☀️ COLORFASTNESS TO LIGHT

Colorfastness to light is a material's degree of resistance to the fading effect of light.

PASSES Minimum AATCC 16: Grade 4 minimum 40hrs

☆ PHYSICAL PROPERTIES

Three physical property tests include: 1 - Brush Pilling to determine a fabric's pilling; 2 - Breaking Strength to determine the ability of a fabric to withstand tension without breaking or tearing; 3 - Seam Slippage to determine the extent of the pulling apart of fabrics at the seams.

PASSES

Pilling ASTM D3511 (Brush Pilling test)

Breaking Strength ASTM D5034 (Grab Test), 50 lbs. minimum in warp and weft

Seam Slippage ASTM D4034, 25 lbs. minimum in warp and weft

⚠️ ABRASION

Abrasion is the ability of a fabric to withstand damage from wear and rubbing.

PASSES ASTM D4157 Wyzenbeek Method or D4966 Martindale method

CLEANING CODE DEFINITIONS

W/S - Clean with a water-based cleaning agent or solvent: Depending on the stain, you can use a dry-cleaning solvent, the foam of a mild detergent, or upholstery shampoo.

Please visit Allseating's website for cleaning instructions at www.allseating.com.

CODES IN THE CARD INTERIOR ARE NOT TO BE REFERENCED FOR ANY ALLSEATING ORDER.

TO VIEW OUR ENTIRE FABRIC COLLECTION, VISIT ALLSEATING.COM

VISIT THE MANUFACTURERS WEBSITE AT CAMIRA.COM

QUESTIONS? Email us at marketing@allseating.com 📞 1 800 563 3502 📠 1 800 272 9911

TORONTO

5800 Avebury Road, Unit 2
Mississauga, ON L5R 3M3

FC-NWOOLS / JUNE 2023

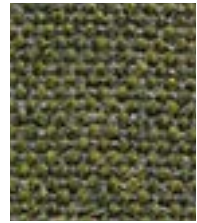
CHICAGO*

325 North Wells Street, Suite 210
Chicago, IL 60654

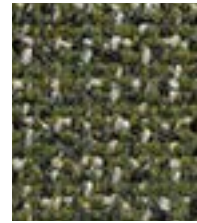
*By appointment only

INTERFUSE
MONUMENT
MORDEN
BAYSWATER
REGARD
AFFIX
UPMINSTER
BETHNAL
HUDDLE
STANMORE
WED
HAMPSTEAD
EMBANKMENT
SYNC
SHADWELL
PERIVALE
LOOP
RELATE
SERENDIPITY
ALPERTON
BALHAM
VENTURE
FELLOWSHIP
CONE
SPIN
BLACKWALL

allseating 



**Main Line Flax
Moorgate MLF57**



**Main Line Twist
Creel MLT09**



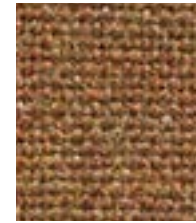
**Synergy
Interfuse LDS48**



**Synergy
Affix LDS32**



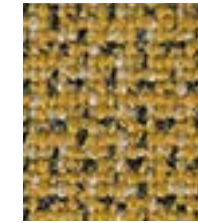
**Main Line Twist
Ply MLT10**



**Main Line Flax
Perivale MLF59**



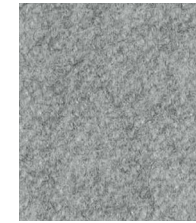
**Synergy
Loop LDS18**



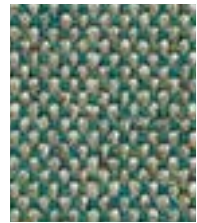
**Main Line Twist
Fold MLT01**



**Main Line Flax
Archway MLF02**



**Synergy
Serendipity LDS08**



**Main Line Flax
Bayswater MLF24**



**Synergy
Regard LDS54**



**Main Line Twist
Card MLT08**



**Main Line Flax
Monument MLF09**



**Main Line Flax
Morden MLF12**



**Main Line Flax
Lambeth MLF08**



**Synergy
Congregate LDS83**



**Synergy
Relate LDS44**



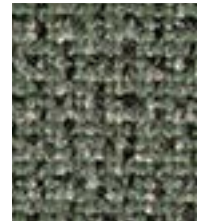
**Main Line Flax
Uppminster MLF20**



**Main Line Twist
Spin MLT12**



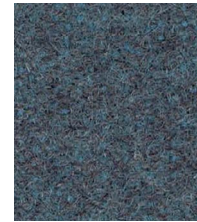
**Main Line Flax
Westminster MLF22**



**Main Line Twist
Blend MLT11**



**Main Line Flax
Bethnal MLF25**



**Synergy
Family LDS58**



**Main Line Twist
Micron MLT14**



**Synergy
Mutual LDS84**



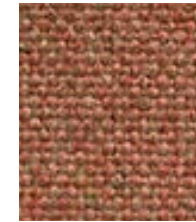
**Synergy
Similar LDS81**



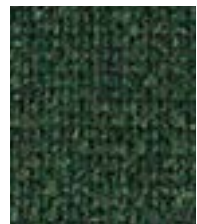
**Main Line Flax
Balham MLF44**



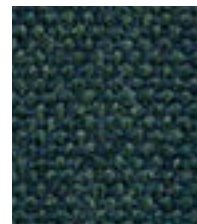
**Synergy
Affinity LDS74**



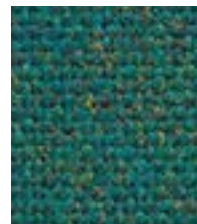
**Main Line Flax
Alperton MLF43**



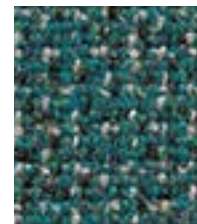
**Main Line Flax
Hornchurch MLF55**



**Main Line Flax
Hampstead MLF53**



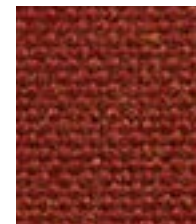
**Main Line Flax
Stanmore MLF37**



**Main Line Twist
Scour MLT07**



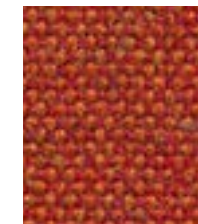
**Synergy
Wed LDS34**



**Main Line Flax
Barking MLF45**



**Main Line Twist
Cone MLT02**



**Main Line Flax
Leyton MLF13**



**Main Line Flax
Aldgate MLF01**



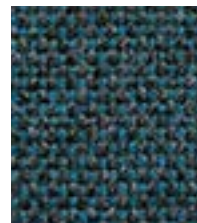
**Main Line Twist
Spool MLT03**



**Main Line Twist
Yarn MLT04**



**Synergy
Huddle LDS65**



**Main Line Flax
Brompton MLF35**



**Main Line Twist
Slub MLT15**



**Synergy
Mix LDS17**



**Synergy
Venture LDS05**



**Main Line Flax
Brixton MLF47**



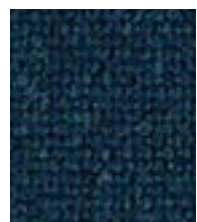
**Main Line Twist
Crimp MLT06**



**Main Line Flax
Blackwall MLF46**



**Synergy
Values LDS87**



**Main Line Flax
Embankment MLF50**



**Main Line Twist
Fibre MLT05**



**Synergy
Sync LDS69**



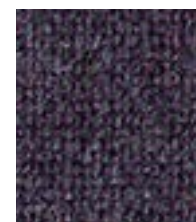
**Main Line Flax
Shadwell MLF63**



**Main Line Twist
Hank MLT13**



**Main Line Flax
Tower MLF36**



**Main Line Flax
Chigwell MLF48**



**Synergy
Together LDS70**



**Synergy
Fellowship LDS66**



**Main Line Flax
Northfields MLF40**