

SOLIDS



FEDORA Winter



Light Grey



Dew



Dapper



Fawn



Opal



Topaz



Citron



Eucalyptus



Cactus



Tangelo



Tomato



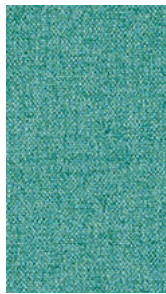
Ruby



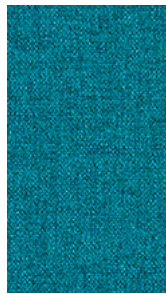
Persimmon



Plum



Aquamarine



Aegean



Indigo



Purple



Midnight



Mink



Pewter



Charcoal



Espresso



Bitumen

Technical Information

Width/ Pattern	Fabric Grade	Fiber Content & Backing	Weight	Abrasion Resistance	Light- fastness	Approx. Repeats	Cl. Code
54" Fedora     	4	100% Polyester Polyester Backing	15 oz./ linear yard	100,000 Double Rubs	40 Hours Class 4	None	W

EXPLANATION OF ACT ICONS FOR UPHOLSTERY

Fire Retardancy

Flammability testing determined as fabric's resistance to burning.

PASSES California 117 2013

Colorfastness to Wet and Dry Crocking

Colorfastness to wet & dry crocking refers to the rubbing off of color from the fabric onto clothing, hands or other materials and can occur under wet or dry conditions.

PASSES AATCC 8 Dry Crocking: Class 4 minimum; Wet Crocking: Class 4 minimum

Colorfastness to Light

Colorfastness to light is the degree to which fabric will retain its color when exposed to light.

PASSES AATCC 16; Class 4 minimum at 40 hours

NOTE: Class 4 at 40 hours is recommended for direct sunlight exposure situations.

Physical Properties


3 physical property tests include: brush pill test to determine a fabric's pilling. Breaking/tensile strength is the ability of a fabric to withstand tension without breaking or tearing. Seam slippage is the pulling apart of fabrics at the seams.

PASSES Brush Pill ASTM D3511, 5
Breaking Strength ASTM 5034- Warp: 290 lbs,
Fill: 239 lbs.

Abrasion

Abrasion is the ability of a fabric to withstand damage from wear and rubbing. There is a general contract specification as well as heavy duty specification.

PASSES

 (Heavy Duty) ASTM 4157 modified (#10 cotton duck); 100,000 double rubs Wyzenbeek Method

Cleaning Code Definitions

W Water-based cleaner.

Spot clean, using the foam only from a water-based cleaning agent, such as a mild detergent or non-solvent upholstery shampoo product. Apply foam with a soft brush in a circular motion. Always rinse promptly with clean water. Vacuum when dry. Pretest small area before proceeding.

Please visit manufacturer's website for cleaning guide at www.mayerfabrics.com



MAYERFABRICS

For additional colors or to view our entire fabric collection, visit allseating.com

Toronto Office: 5800 Avebury Road, Unit 2, Mississauga, ON L5R 3M3
Chicago Office: Suite 210, 325 North Wells Street, Chicago, IL 60654
New York Showroom: 1140 Broadway, Suite 902, NYC 10001
www.allseating.com **T** 1 800 563 3502 **F** 1 800 272 9911

*By appointment only. SKU: BF9944 Printed in Canada 08/2017

allseating 