

## Lightning



Parakeet



Oslo



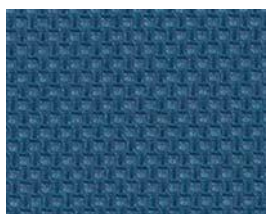
Linen



Angora



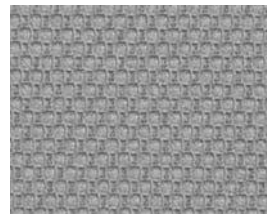
Marigold



Lapis



Rose Gold



Grigio



Tangelo



Marina



Tan



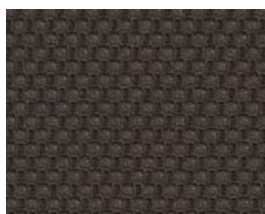
Shale



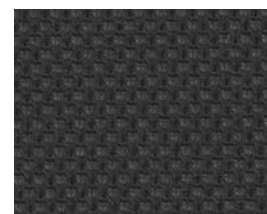
Scarlet



Concord








Truffle



Eclipse

Click on an image to view specifications /  
order memo samples.

TECHNICAL INFORMATION							
WIDTH/ PATTERN	FIBER CONTENT & BACKING	WEIGHT	PROTECTIVE FINISH	ABRASION RESISTANCE	LIGHT- FASTNESS	APPROX. REPEATS	CI. CODE
54" AMPLIFY 	VINYL SURFACE WITH POLYESTER BACKING	30.0 OZ./ LINEAR YARD ± 1.0 OZ.	ADVANCED SOIL AND STAIN RESISTANT TOP COAT	EXCEEDS 100,000 DOUBLE RUBS	CLASS 5 300 HOURS	N/A	W-S

EXPLANATION OF ACT ICONS FOR UPHOLSTERY		
<p> <b>FLAMMABILITY</b></p> <p>The measurement of a fabric's performance when it is exposed to specific sources of ignition.</p> <p>PASSES California Technical Bulletin 117-2013 Section 1</p> <p> <b>WET &amp; DRY CROCKING</b></p> <p>Transfer of dye from the surface of a dyed or printed fabric onto another surface by rubbing.</p> <p>PASSES Minimum AATCC 8 Dry = Grade 4; Wet = Grade 3</p> <p> <b>COLORFASTNESS TO LIGHT</b></p> <p>Colorfastness to light is a material's degree of resistance to the fading effect of light.</p> <p>PASSES Minimum AATCC 16: Grade 4 minimum 40hrs</p>	<p> <b>PHYSICAL PROPERTIES</b></p> <p>Three physical property tests include: 1 - Martindale Tester to determine a fabric's pilling (the formation of fuzzy balls of fiber on the surface of a fabric); 2 - Breaking Strength to determine the ability of a fabric to withstand tension without breaking or tearing; 3 - Seam Slippage to determine the extent of the pulling apart of fabrics at the seams.</p> <p>PASSES</p> <p>Pilling ASTM D4970 (Martindale Tester)</p> <p>Breaking Strength ASTM D5034 (Grab Test), 50 lbs. minimum in warp and weft</p> <p>Seam Slippage ASTM D4034, 25 lbs. minimum in warp and weft</p>	<p> <b>ABRASION</b></p> <p>Abrasion is the ability of a fabric to withstand damage from wear and rubbing.</p> <p>PASSES ASTM D4157 (ACT approved #10 Cotton Duck) 30,000 double rubs Wyzenbeek Method</p> <p><b>CLEANING CODE DEFINITIONS</b></p> <p>W-S – For water-based stains use water-based cleaners. For oil-based stains use solvent-based cleaners. We recommend using a professional cleaning service. Bleach solutions of up to 10% may be used for more difficult stains.</p>

Grade 4 as of July 2022. This document is a living document and uncontrolled when printed. Price grade is subject to change.

TO VIEW OUR ENTIRE FABRIC COLLECTION, VISIT [ALLSEATING.COM](http://ALLSEATING.COM)

**QUESTIONS?** Email us at [marketing@allseating.com](mailto:marketing@allseating.com) T 1 800 563 3502 F 1 800 272 9911

**TORONTO**  
5800 Avebury Road, Unit 2  
Mississauga, ON L5R 3M3

**CHICAGO\***  
325 North Wells Street, Suite 210  
Chicago, IL 60654

**NEW YORK\***  
1140 Broadway, Suite 307  
New York, NY 10001

\*By appointment only