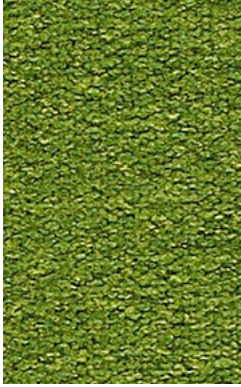


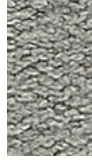
FAUX FELT  
DART  
SKIP  
GRAPH  
BOBBY  
SLICE  
GRID  
LENS  
BARK  
SLATE  
NICKEL  
CRIMSON  
ONYX  
GLOW  
PUMICE  
SILVER  
SURF  
NAVY  
CADET  
VIBRANT  
SUNBEAM  
FUCHSIA  
POOL  
APPLE  
ANCHOR  
FLINT

## SUSTAINABLE PERFORMANCE

MOMENTUM  
TEXTILES



**FAUX FELT** Sprout



Stone



Pumice



Camel



Berry



Graphite



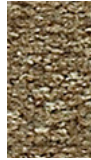
Charcoal



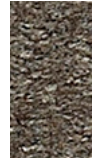
Pool



Lagoon



Path



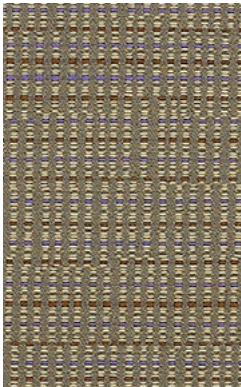
Bark



Vibrant



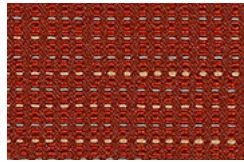
Quail



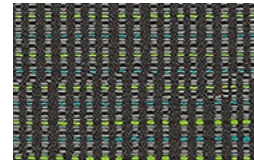
**DART** Ash



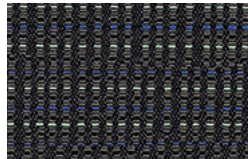
Ink



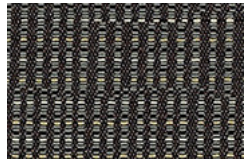
Carmine



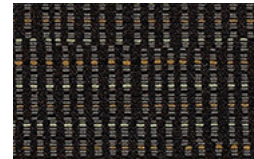
Geode



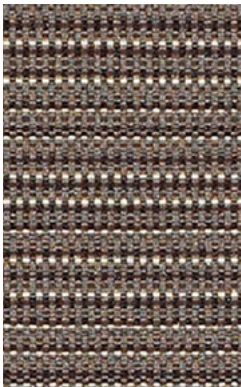
Cadet



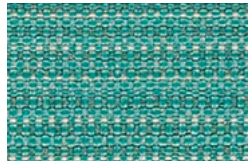
Slate



Ebony



**SKIP** Alloy



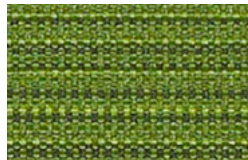
Pool



Yacht



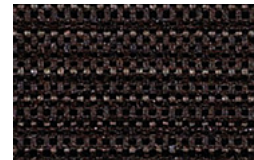
Ruby



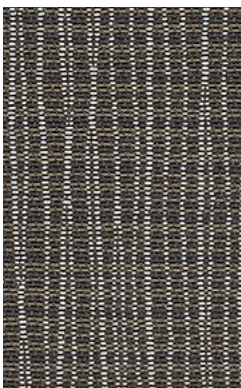
Sprite



Nickel



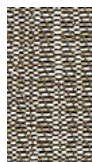
Onyx



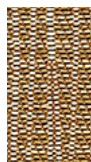
**GRAPH** Alloy



Alpine



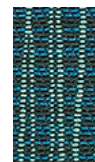
Chalice



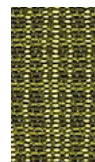
Cork



Poppy



Tidal



Parrot



Wave



Lapis



Ruby



Bark



Coal



Anchor





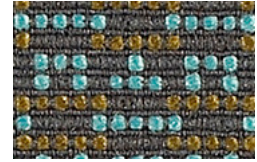
**BOBBY** Moss



Lemon



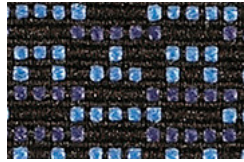
Fuchsia



Aqua



Glow



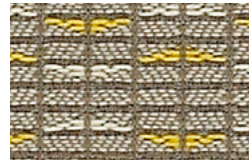
Iris



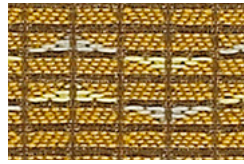
Anchor



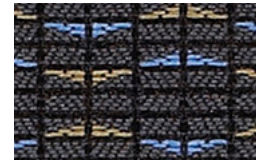
**SLICE** Charcoal



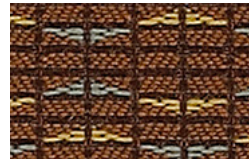
Miller



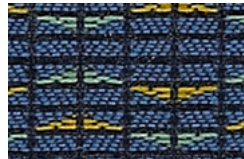
Pumice



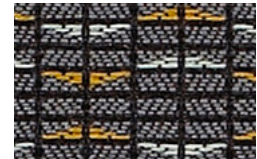
Slate



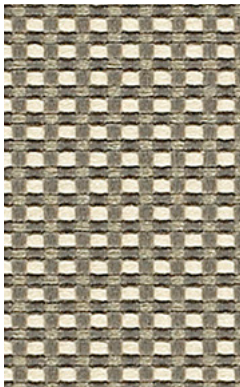
Henna



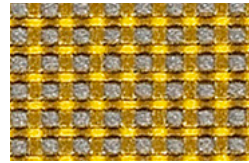
Admiral



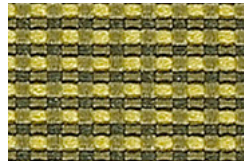
Graphite



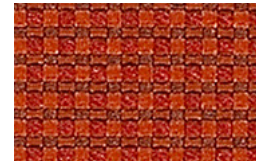
**GRID** Chrome



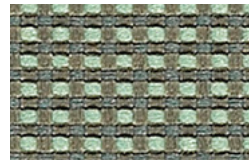
Sunbeam



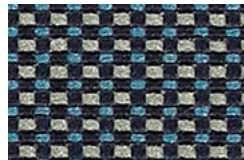
Apple



Scarlet



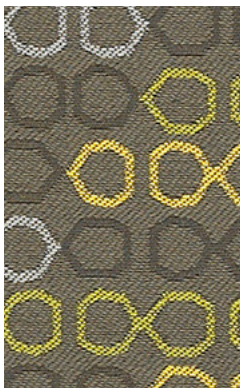
Glacier



Surf



Flint



**LENS** Graphite



Sand



Silver



Crimson



Terra











































Navy



Night

# Technical Information

Width/ Pattern	Fiber Content & Backing	Weight	Abrasion Resistance	Light- fastness	Approx. Repeats	Cl. Code
56" Faux Felt     	62% Repreve® Post Consumer Recycled Polyester, 38% Polyester Acrylic Backing	1.07 lb./linear yard	75,000 Double Rubs	40 Hours Class 4.5	N/A	WS Bleach Cleanable (10:1)
56" Dart     	89% Repreve® Post Consumer Recycled Polyester, 11% Polyester Acrylic Backing	0.98 lb./linear yard	102,000 Double Rubs	40 Hours Class 5	9 5/8" L, 4 7/8" H	W
54" Skip     	55% Post Consumer Recycled Polyester, 45% Polyester Acrylic Backing	0.68 lb./linear yard	70,000 Double Rubs	40 Hours Class 4	N/A	WS
56" Graph     	75% Repreve® Post Consumer Recycled Polyester, 25% Polyester Acrylic Backing	0.86 lb./linear yard	170,000 Double Rubs	40 Hours Class 5	3 3/8" L, 7 1/2" H	W
54" Bobby     	68% Repreve® Post Consumer Recycled Polyester, 32% Polyester Acrylic Backing	1.24 lb./linear yard	150,000 Double Rubs	40 Hours Class 3.5	7/8" L, 1/2" H	WS
54" Slice     	84% Repreve® Post Consumer Recycled Polyester, 16% Polyester Acrylic Backing	1.11 lb./linear yard	80,000 Double Rubs	40 Hours Class 5	7/8" L, 3/4" H	WS
54" Grid     	64% Repreve® Post Consumer Recycled Polyester, 36% Polyester Acrylic Backing	1.25 lb./linear yard	160,000 Double Rubs	40 Hours Class 4	1/16" L, 1/8" H	WS
56" Lens     	81% Repreve® Post Consumer Recycled Polyester, 19% Recycled Polyester Acrylic Backing	1.06 lb./linear yard	110,000 Double Rubs	40 Hours Class 4.5	10" L, 7 1/2" H	W

## EXPLANATION OF ACT ICONS FOR UPHOLSTERY

### Fire Retardancy

Flammability testing determined as fabric's resistance to burning.

PASSES California 117 2013

### Colorfastness to Wet and Dry Crocking

Colorfastness to wet & dry crocking refers to the rubbing off of color from the fabric onto clothing, hands or other materials and can occur under wet or dry conditions.

PASSES AATCC 8-1974 Dry Crocking: Class 4 minimum; Wet Crocking: Class 3 minimum

### Colorfastness to Light

Colorfastness to light is the degree to which fabric will retain its color when exposed to light.

PASSES AATCC 16A-1974 or AATCC 16E-1976; Class 4 minimum at 40 hours

NOTE: Class 4 minimum at 60 hours is recommended for direct sunlight exposure situations.

### Physical Properties


3 physical property tests include: brush pill test to determine a fabric's pilling. Breaking/tensile strength is the ability of a fabric to withstand tension without breaking or tearing. Seam slippage is the pulling apart of fabrics at the seams.

PASSES Brush Pill ASTM D3511, 3-4 minimum  
Breaking Strength ASTM D3597-D1682-64 (1975)  
50 lbs. minimum in warp & weft

### Abrasion

Abrasion is the ability of a fabric to withstand damage from wear and rubbing. There is a general contract specification as well as heavy duty specification.

PASSES

 (Heavy Duty) ASTM 3597 modified (#10 cotton duck); 30,000 double rubs Wyzenbeek Method or ASTM D4966 (with 21 oz. weight); 40,000 rubs Martindale Method

### Cleaning Code Definitions

**WS** Water-based cleaning agents or foam.

**W** Water-based foam or cleaner.

Please visit manufacturer's website for cleaning guide at [www.themongroup.com](http://www.themongroup.com)

## TORONTO

5800 Avebury Road, Unit 2  
Mississauga, ON L5R 3M3

SKU BF9948

## CHICAGO\*

325 North Wells Street, Suite 210  
Chicago, IL 60654

Printed in Canada 04/2018

## NEW YORK\*

1140 Broadway, Suite 307  
New York, NY 10001

\*By appointment only

**FOR ADDITIONAL COLORS OR  
TO VIEW OUR ENTIRE FABRIC  
COLLECTION, VISIT ALLSEATING.COM**  
T 1 800 563 3502 F 1 800 272 9911