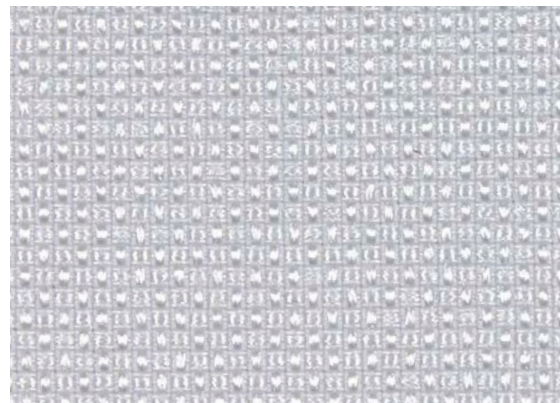


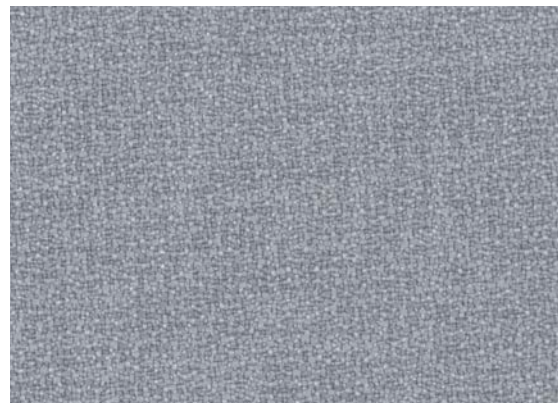
MANNER  
MESSENGER  
MURMUR  
MELD  
METRIC  
MUSE  
HARMONICA  
SEAPORT  
NOBLE  
PARAKEET  
AZURE  
REEF  
ICEBERG  
WATERFALL  
SUNNY  
WILD  
GRASSHOPPER  
LUMINE  
BULB  
HOPSCOTCH  
GUST  
STARK  
RUNWAY  
CAULDRON  
ONYX  
CRESCENDO

M SERIES

MAHARAM



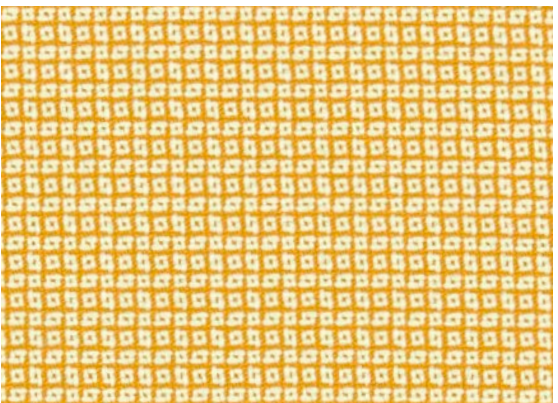
Muse, 066 Refresh



Manner, 029 Silverpoint



Murmur, 010 Baby



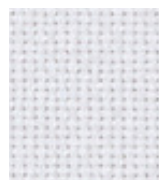
Metric, 040 Sunny



Messenger, 096 Apple



Meld, 026 Bare



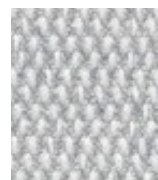
Meld, 011 Stark



Messenger, 058 Snow



Meld, 009 Bulb



Messenger, 046 Ice



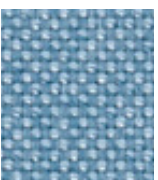
Meld, 007 Grate



Messenger, 091 Vireo



Metric, 034 Middy



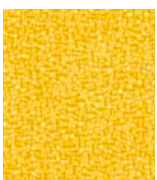
Meld, 036 Nordic



Meld, 035 Waterfall



Muse, 012 Grasshopper



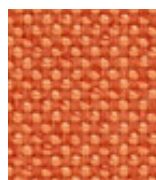
Manner, 046 Passerine



Meld, 027 Blonde



Messenger, 053 Tangelo



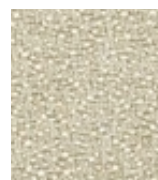
Meld, 023 Clementine



Metric, 043 Galah



Manner, 048 Roseate



Manner, 005 Hush



Muse, 007 Clear



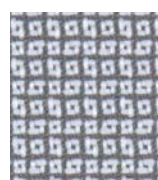
Messenger, 089 Blanch



Metric, 029 Skate



Muse, 023 Vase



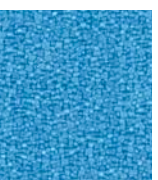
Metric, 030 Hopscotch



Murmur, 001 Gust



Muse, 004 Ascend



Manner, 035 Cruise



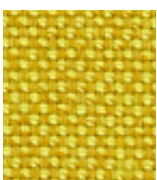
Manner, 023 Cottage



Murmur, 012 Iceberg



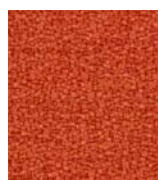
Meld, 031 Wild



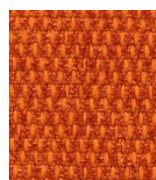
Meld, 029 Comet



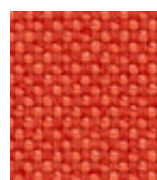
Messenger, 054 Lumine



Manner, 014 Peel



Messenger, 071 Satsuma



Meld, 022 Heat



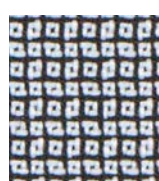
Muse, 027 Jovial



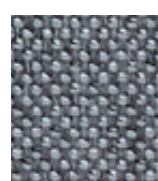
Muse, 010 Compass



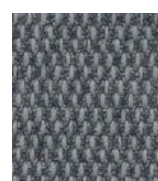
Messenger, 090 Longspur



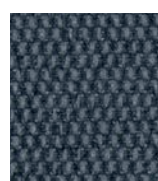
Metric, 031 Film



Meld, 005 Quill



Messenger, 031 Cloud



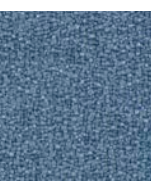
Messenger, 092 Dipper



Murmur, 008 Rapids



Manner, 033 Wood



Manner, 038 Tidewater



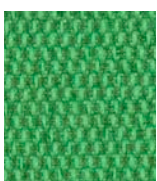
Muse, 017 Riverbend



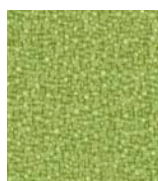
Muse, 016 Frigid



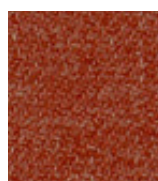
Metric, 035 Talisman



Messenger, 095 Lime



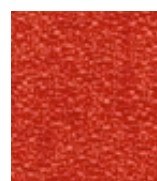
Manner, 020 Parakeet



Murmur, 019 Ignite



Muse, 031 Spectacle



Manner, 013 Ablaze



Muse, 028 Theater



Manner, 050 Siltstone



Messenger, 077 Ash



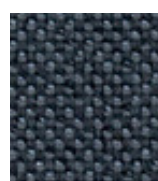
Murmur, 002 Harmonica



Muse, 003 Runway



Metric, 024 Anchor



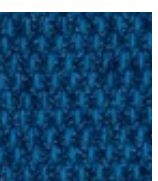
Meld, 003 Skyline



Messenger, 038 Depth



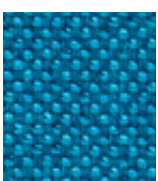
Metric, 027 Seaport



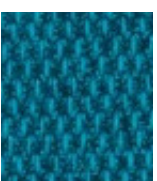
Messenger, 040 Nile



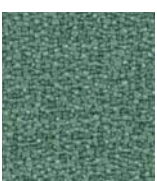
Messenger, 061 Capri



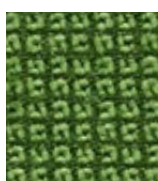
Meld, 037 Reef



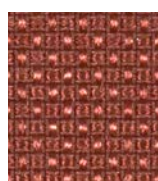
Messenger, 041 Azure



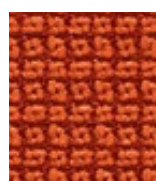
Manner, 043 Dill



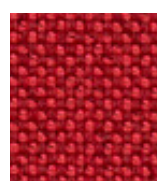
Metric, 020 Alligator



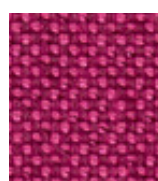
Muse, 026 Neat



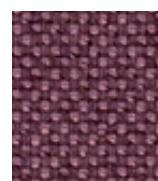
Metric, 013 Lava



Meld, 020 Magma



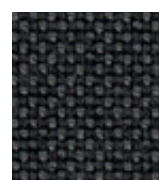
Meld, 017 Fuchsia



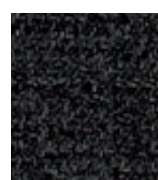
Meld, 018 Amethyst



Meld, 014 Crater



Meld, 002 Panda



Murmur, 006 Cauldron



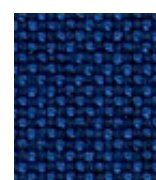
Muse, 002 Resonate



Muse, 019 Pulsar



Murmur, 009 Seawater



Meld, 041 Mariner



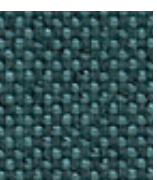
Muse, 018 Noble



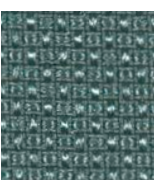
Manner, 026 Basin



Manner, 022 Aquatic



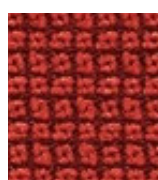
Meld, 034 Kale



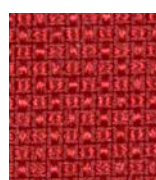
Muse, 014 Mistletoe



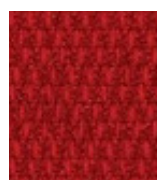
Murmur, 015 Biome



Metric, 012 Cardinal



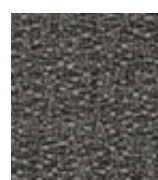
Muse, 030 Celebrate



Messenger, 025 Mao



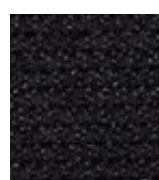
Manner, 051 Kimono



Manner, 003 Porpoise



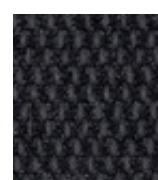
Murmur, 004 Dim



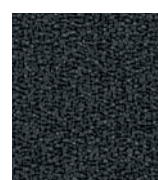
Messenger, 029 Onyx



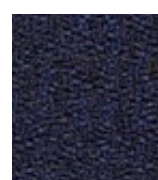
Muse, 001 Crescendo



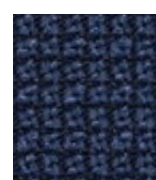
Messenger, 008 Bayou



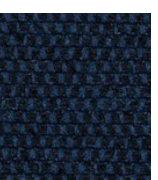
Manner, 032 Magnetic



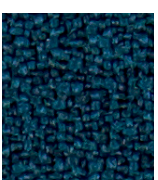
Manner, 027 Schooner



Metric, 026 Admiral



Messenger, 086 Voyage



Manner, 040 Oceanside



Messenger, 094 Hunter



Murmur, 011 Elderberry



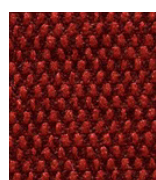
Messenger, 087 Everglade



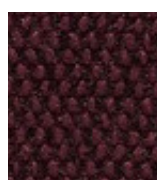
Muse, 013 Goal



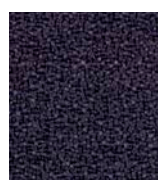
Muse, 029 Poinsettia



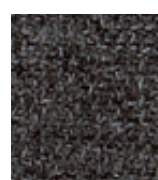
Messenger, 069 Cherry



Messenger, 066 Cassis



Manner, 052 Valiant



Murmur, 005 Peppercorn



Manner, 004 Flint

# Technical Information

Width/ Pattern	Fabric Grade	Fiber Content & Backing	Weight	Protective Finish	Abrasion Resistance	Light- fastness	Approx. Repeats	Cl. Code
54" Manner      	5	65% Post-Industrial Recycled Polyester, 35% Post-Consumer Recycled Polyester	16.9 oz./ Linear Yard	PFOA-Free Stain Resistant	300,000 Double Rubs	40 Grade 4, 40 hours	N/A	WS
54" Messenger      	5	78% Post-Industrial Recycled Polyester, 15% Polyester, 7% Nylon	14.2 oz./ Linear Yard	PFOA-Free Stain Resistant	100,000 Double Rubs	40 Grade 5, 40 hours	N/A	WS
55" Murrur      	5	100% Polyester	12.2 oz./ Linear Yard	PFOA-Free Stain Resistant	75,000 Double Rubs	40 Grade 4, 40 hours	N/A	WB
54" Meld      	5	68% Post-Consumer Recycled Polyester, 32% Polyester	16.5 oz./ Linear Yard	PFOA-Free Stain Resistant	100,000 Double Rubs	40 Grade 4, 40 hours	N/A	WS
54" Metric      	5	51% Post-Industrial Recycled Polyester, 49% Polyester	15 oz./ Linear Yard	PFOA-Free Stain Resistant	100,000 Double Rubs	40 Grade 4, 40 hours	N/A	WS
54" Muse      	5	100% Post-Consumer Recycled Polyester	16.2 oz./ Linear Yard	N/A	100,000 Double Rubs	40 Grade 4, 40 hours	N/A	WSB

## EXPLANATION OF ACT ICONS FOR UPHOLSTERY

### Fire Retardancy

Flammability testing determined as fabric's resistance to burning.

PASSES Minimum California 117-2013 Section 1

### Wet & Dry Crocking

Transfer of dye from the surface of a dyed or printed fabric onto another surface by rubbing.

PASSES Minimum AATCC 8 Dry = Grade 4; Wet = Grade 3

### Colorfastness to Light

Colorfastness to light is the degree to which fabric will retain its color when exposed to light.

PASSES Minimum AATCC 16: Grade 4 minimum 40hrs

### Physical Properties

3 physical property tests include: brush pill test to determine a fabric's pilling. Breaking/tensile strength is the ability of a fabric to withstand tension without breaking or tearing. Seam slippage is the pulling apart of fabrics at the seams.

PASSES Brush Pill ASTM-D3511, Class 3 minimum

Grab Test ASTM D5034, 50 lbs. minimum in warp and weft

Seam Slippage ASTM D4034, 25 lbs. minimum in warp and weft

### Abrasion

The surface wear of a fabric caused by friction.

PASSES Minimum 30,000 double rubs  
Wyzenbeek method

### UL Listed

UL has established a recognition program for panel textiles that allows suppliers to register products with them. UL recognition for a panel textile means that the textile is approved to use on panel systems that are wired with electricity.

### Cleaning Code Definitions

**WS** Clean with water-based cleanser or mild, water-free dry cleaning solvent.

**WB\*** Clean with water-based cleanser or diluted household bleach.

**WSB\*** Clean with water-based cleanser; mild, water-free dry cleaning solvent, or diluted household bleach.

\*Bleach cleanable ratio 1:10

Please visit manufacturer's website for cleaning instructions at [www.maharam.com](http://www.maharam.com).

## TORONTO

5800 Avebury Road, Unit 2  
Mississauga, ON L5R 3M3

SKU B10034

## CHICAGO\*

325 North Wells Street, Suite 210  
Chicago, IL 60654

Printed in US 07/2020

## NEW YORK\*

1140 Broadway, Suite 307  
New York, NY 10001

\*By appointment only

**CODES ON THIS CARD ARE NOT TO BE REFERENCED. VISIT ALLSEATING.COM FOR PROPER FABRIC CODES.**

**TO VIEW OUR ENTIRE FABRIC COLLECTION, VISIT ALLSEATING.COM**  
T 1 800 563 3502 F 1 800 272 9911