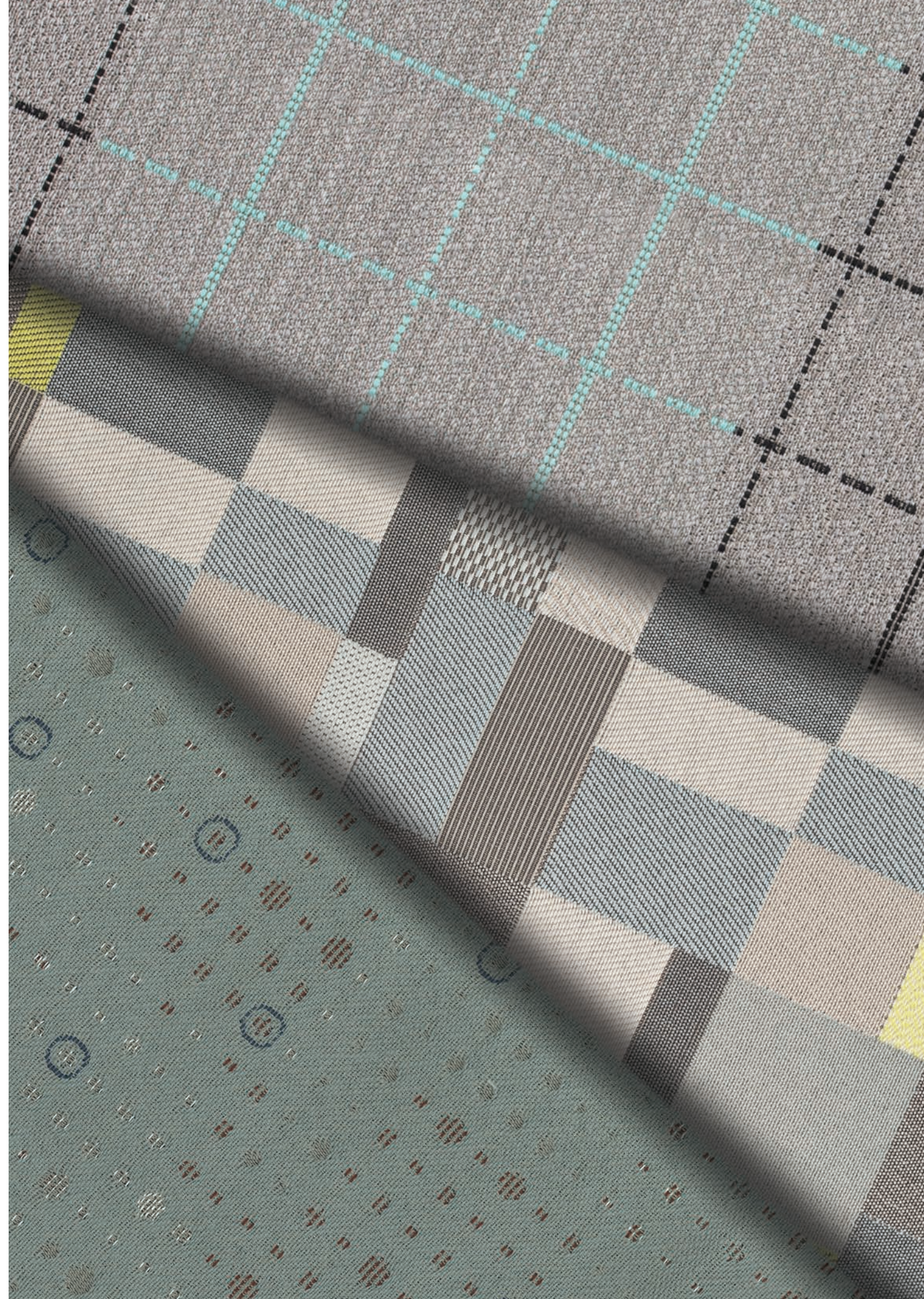


E N G A D I N

BAUHAUS
GRID
DOTS

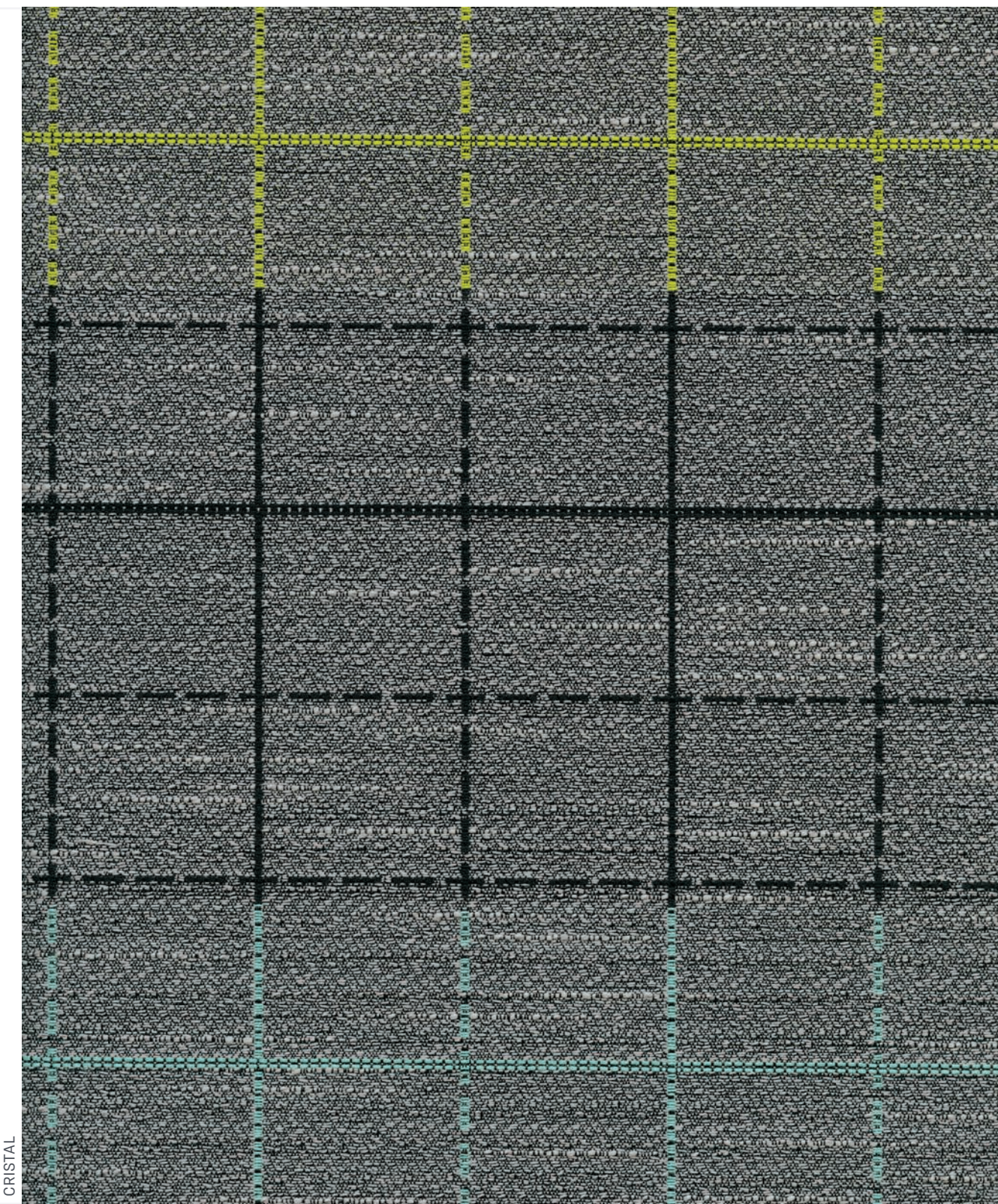
SAMEDAN
LA PUNT
ZUOZ
MORITZ
MADULAIN
ISOLA
LEJ
INN
CRISTAL
PLAUN
CHAMPFER
ALBULA
VALLEY
ALPINE
ZERNEZ
LANDECK
JULIER
MALOJA



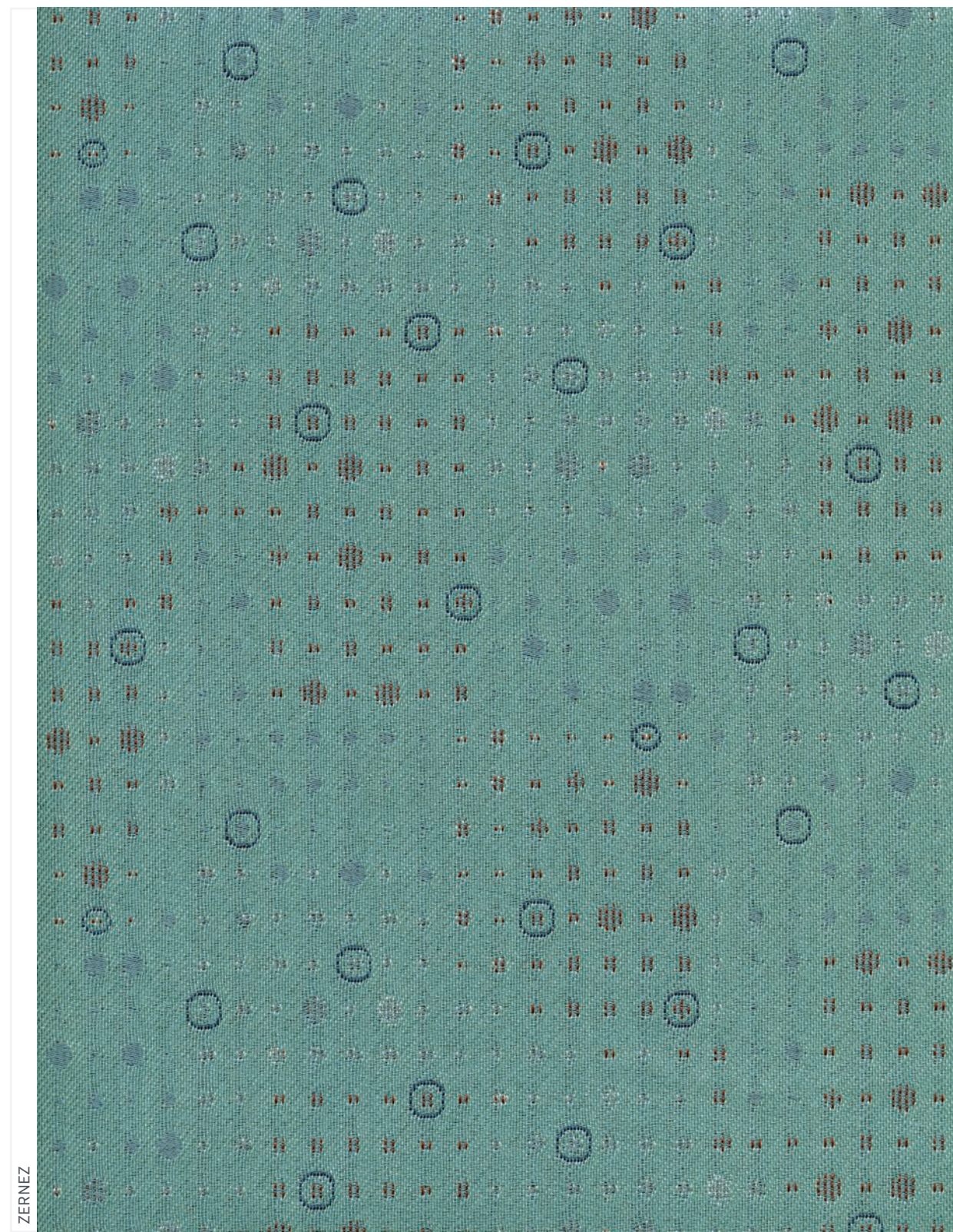
B A U H A U S



G R I D



D O T S



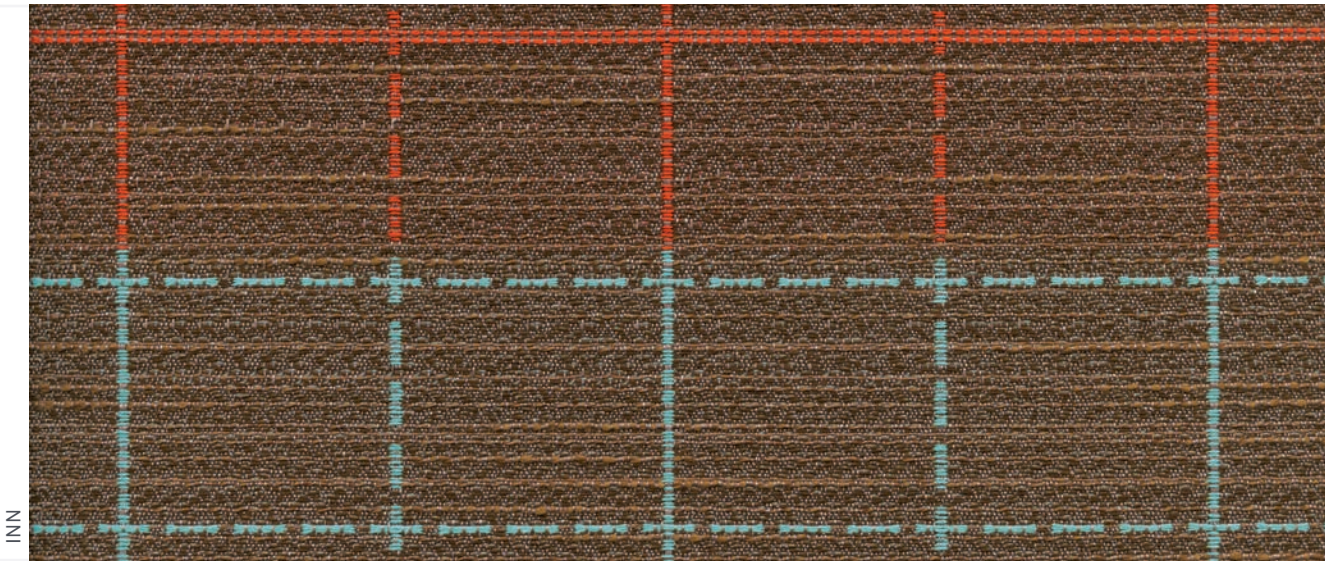
BAUHAUS

GRID

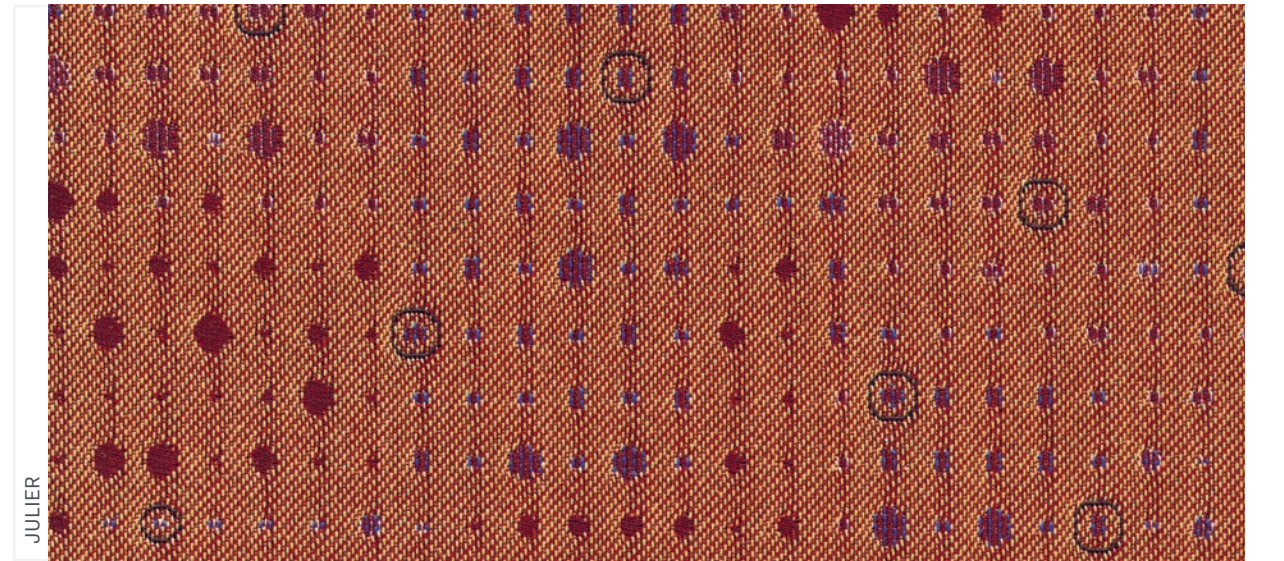
DOTS



ZUOZ



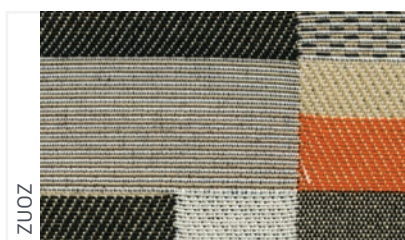
INN



JULIER



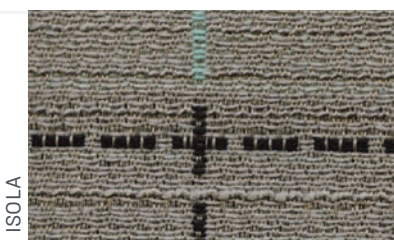
SAMEDAN



ZUOZ



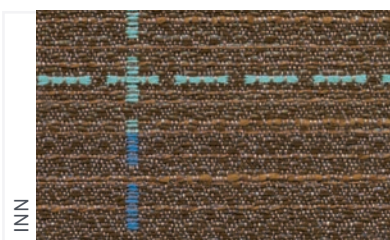
MORITZ



ISOLA



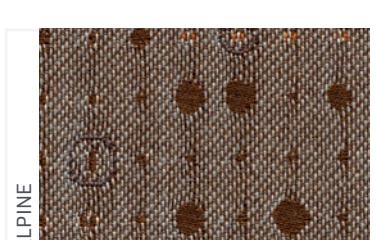
LEJ



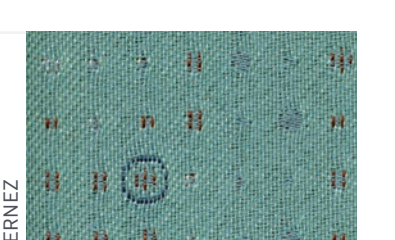
INN



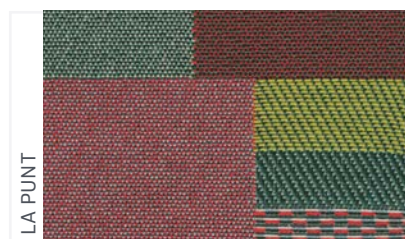
ALBULA



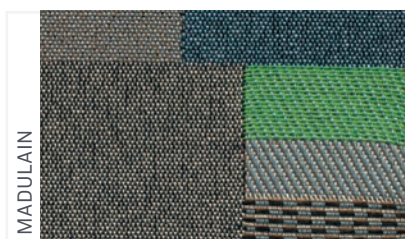
ALPINE



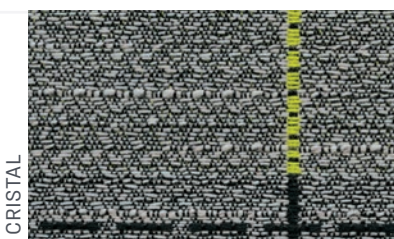
ZERNEZ



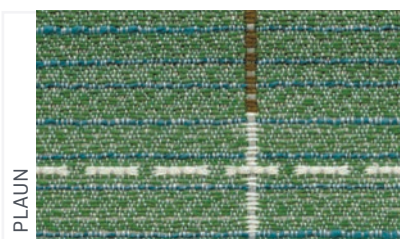
LA PUNT



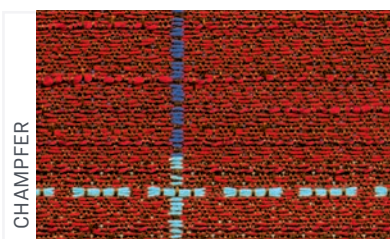
MADULAIN



CRISTAL



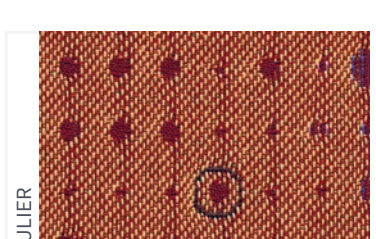
PLAUN



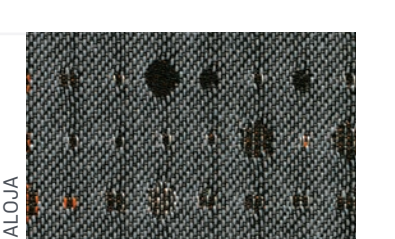
CHAMPFER



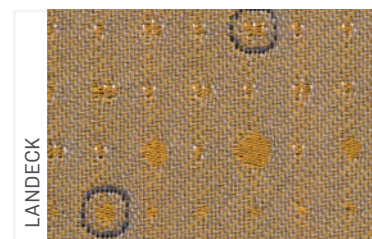
VALLEY



JULIER

















MALOJA



LANDECK

TECHNICAL INFORMATION

WIDTH/ PATTERN	FABRIC GRADE	FIBER CONTENT & BACKING 	WEIGHT	PROTECTIVE FINISH	ABRASION RESISTANCE	LIGHT- FASTNESS	APPROX. REPEATS	CI. CODE
54" BAUHAUS     	4	44% POLYESTER 20% POST-CONSUMER RECYCLED POLYESTER 36% POST-INDUSTRIAL RECYCLED POLYESTER	11.92 OZ./ LINEAR YARD	STAIN REPELLENT AND LIGHT ACRYLIC BACKING	50,000 DOUBLE RUBS	CLASS 4 40 HOURS	V = 21.25" H = 14.5"	WS/WB
54" GRID     	4	38% POLYESTER 47% POST-CONSUMER RECYCLED POLYESTER 15% POST-INDUSTRIAL RECYCLED POLYESTER	13.58 OZ./ LINEAR YARD	STAIN REPELLENT AND LIGHT ACRYLIC BACKING	100,000 DOUBLE RUBS	CLASS 4 40 HOURS	V = 22.75" H = 3.5"	WS/WB
54" DOTS     	4	52% POLYESTER 17% POST-CONSUMER RECYCLED POLYESTER 31% POST-INDUSTRIAL RECYCLED POLYESTER	12.64 OZ./ LINEAR YARD	STAIN REPELLENT AND LIGHT ACRYLIC BACKING	50,000 DOUBLE RUBS	CLASS 4 40 HOURS	V = 9" H = 7"	WS/WB

EXPLANATION OF ACT ICONS FOR UPHOLSTERY

 FLAMMABILITY

The measurement of a fabric's performance when it is exposed to specific sources of ignition.

PASSES California Technical Bulletin 117-2013 Section 1

 WET & DRY CROCKING

Transfer of dye from the surface of a dyed or printed fabric onto another surface by rubbing.

PASSES Minimum AATCC 8 Dry = Grade 4; Wet = Grade 3

 COLORFASTNESS TO LIGHT

Colorfastness to light is a material's degree of resistance to the fading effect of light.

PASSES Minimum AATCC 16: Grade 4 minimum 40hrs

 PHYSICAL PROPERTIES

Three physical property tests include:

1 - Martindale Tester to determine a fabric's pilling (the formation of fuzzy balls of fiber on the surface of a fabric);

2 - Breaking Strength to determine the ability of a fabric to withstand tension without breaking or tearing;

3 - Seam Slippage to determine the extent of the pulling apart of fabrics at the seams.

PASSES

Pilling ASTM D4970 (Martindale Tester)

Breaking Strength ASTM D5034 (Grab Test), 50 lbs. minimum in warp and weft

Seam Slippage ASTM D4034, 25 lbs. minimum in warp and weft

 ABRASION

Abrasion is the ability of a fabric to withstand damage from wear and rubbing.

PASSES ASTM D4157 (ACT approved #10 Cotton Duck) 30,000 double rubs Wyzenbeek Method

CLEANING CODE DEFINITIONS

WS - Clean with water-based cleaning agents, foam or pure water-free solvents.

WB - Clean with water-based cleanser or diluted household bleach.

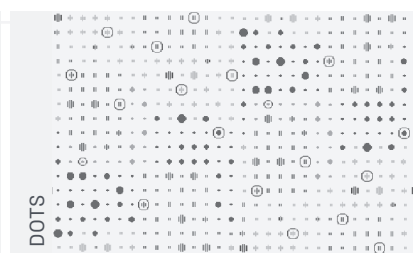
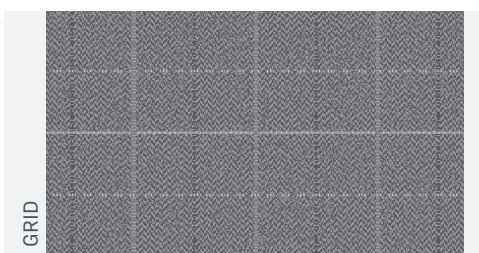
PASSES

ACT Test Method 1-2020 Part 1: Woven and Knit Fabrics

After cleaning solution or bleach is applied to any of these fabrics, they need to be rinsed with clean water to remove residue and dried thoroughly and immediately.

Please visit Allseating's website for cleaning instructions at www.allseating.com.

FULL REPEAT



DESIGNED BY EMANUELA FRATTINI MAGNUSSON, EFM DESIGN

TO VIEW OUR ENTIRE FABRIC COLLECTION, VISIT ALLSEATING.COM

QUESTIONS? Email us at marketing@allseating.com T 1 800 563 3502 F 1 800 272 9911

TORONTO

5800 Avebury Road, Unit 2
Mississauga, ON L5R 3M3

SKU B10044 / MAY 2021

CHICAGO*

325 North Wells Street, Suite 210
Chicago, IL 60654

*By appointment only

NEW YORK*

1140 Broadway, Suite 307
New York, NY 10001