

# FOSTER® PATIENT RECLINER

Comfort. Control. Connection.



# The Foster Patient Recliner was designed with patient, caregiver and family well-being in mind.

The Foster Patient Recliner offers features that speak to the emphasis placed on the patient experience such as; sloped arms, rounded arm caps for ingress and egress optimization, passive built-in lumbar support, infinite recline, dual density seat suspension with molded foam and sinuous springs, and an ergonomic footrest.

Similarly, features such as the ability to mount chair controls on the left or right side, dual side central brake and steer levers and pivoting arms that allow side access to the patient, speak to the emphasis placed on the caregivers experience.

Adding more functionality are options such as the IV pole and foley hooks as well as an optional tablet arm that can be mounted either on the left or right side. The generous 12" x 20" tablet surface is perfect for work, eating or writing and is easily stowed away at the side of the chair when not in use.

Promoting connection for family members, the Foster Patient Recliner is also able to lay flat, given the footrest and back work independently, to provide a comfortable sleeping alternative. It's modern design is also inviting, and due to the limitless upholstery options, it is a positive addition to any healthcare environment.

- 1 Optional Push Bar
- 2 Optional Adjustable Tablet Arm
- 3 Optional Headrest Pad
- 4 Central Brake and Steer
- 5 Foot Tray
- 6 Pivoting Arms
- 7 Foley Hook
- 8 Additional Optional Foley Hook for IV Pole
- 9 IV Pole and Holder

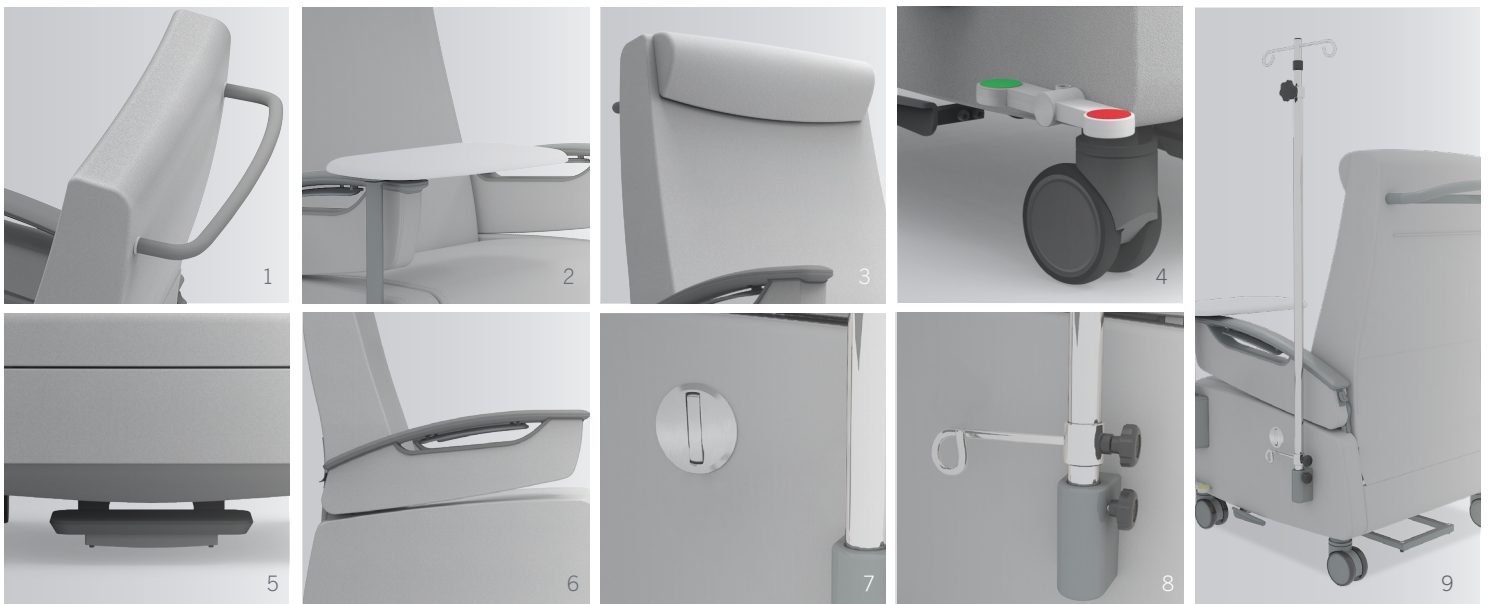
Featured Fabric: J. Ennis PVC Premier in Grey

## Features

- 500 lbs weight limit
- Pivoting armrests - dual sides
- Ergonomic passive lumbar support
- Removable back and seat covers
- Grey polyurethane accents
- Right side (seated) footrest lever (optional left side)
- Independent back and footrest controls
- Optional central brake and steer (single or dual control levers)
- Optional foot tray (extends 8.25" from seat)
- Optional push bar (standard is 5.25" from back, extended is 13.5" from back)
- Optional adjustable headrest pad (push bar required)
- Optional reverse incline
- Optional left or right side tablet arm (12" D | 20" W)
- Optional left, right or dual IV pole with or without adjustable foley hook
- Optional left, right or dual foley hook
- Warranty**  
10 years, on mechanisms and fabric (covered by fabric manufacturer's warranty)

## Dimensions

- Overall 49" H | 30" W | 32" D
- Seat 20" H | 24" W | 25" D
- Back 49" H from Floor | 29" H from Seat | 24" W
- Overall Width with Tablet stowed 35.25"
- Overall Height with IV Pole 60"
- Arm Height 28" H from Floor
- Arm Height 8" H from Seat
- Reclined 77" L



**TORONTO**  
5800 Avebury Road, Unit 2  
Mississauga, ON L5R 3M3

SKU BS9714

**CHICAGO\***  
325 North Wells Street, Suite 210  
Chicago, IL 60654

Printed in Canada 03/2020

**NEW YORK\***  
1140 Broadway, Suite 307  
New York, NY 10001

\*By appointment only

**TO LEARN MORE ABOUT FOSTER  
PATIENT RECLINER, VISIT [ALLSEATING.COM](http://ALLSEATING.COM)**  
T 1 800 563 3502 F 1 800 272 9911